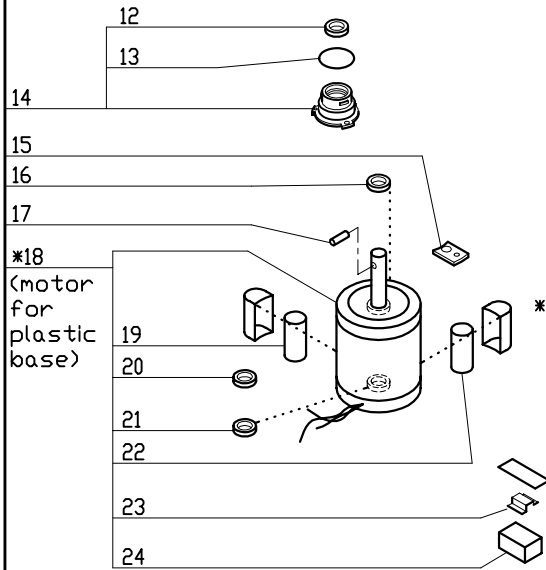
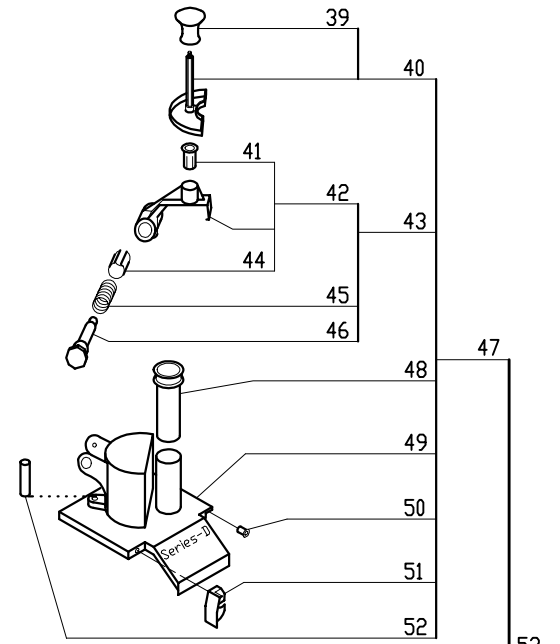
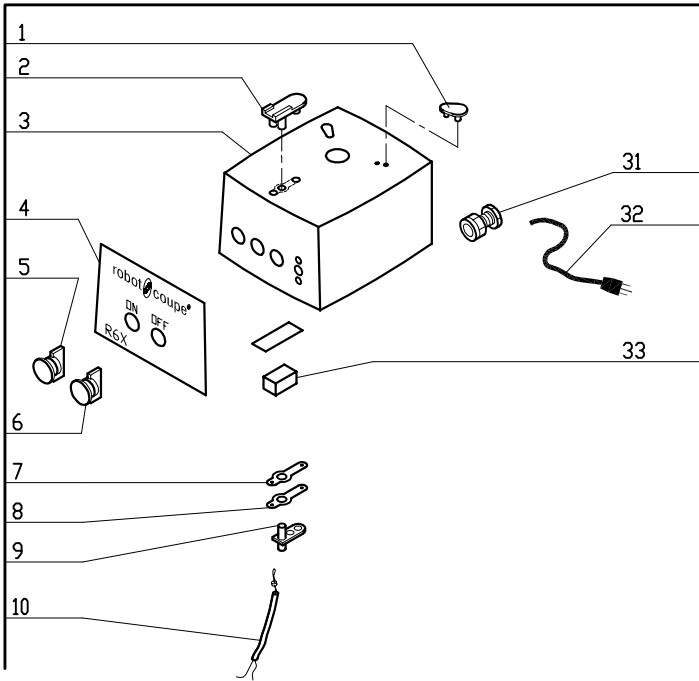
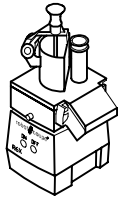
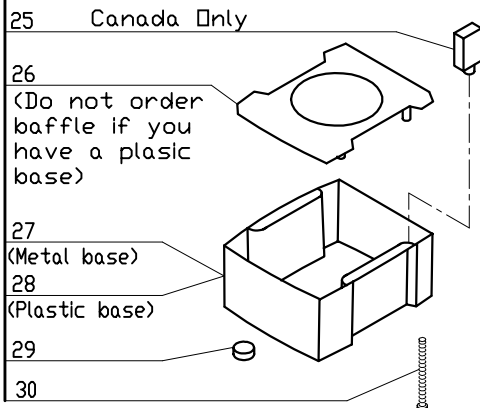
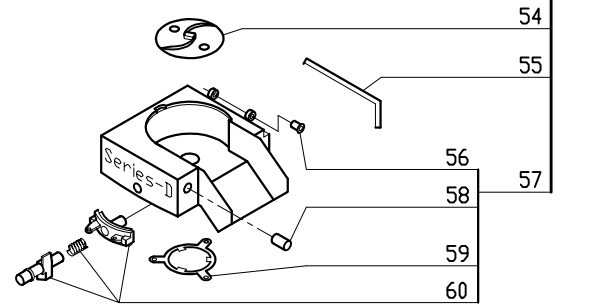
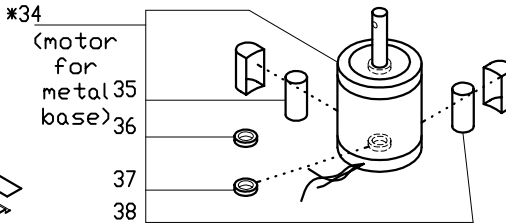


R6X Series D

Series D, Serial Numbers 237xxxxx03
 1- Speed, 120 Volt, 1 Phase, 60Hz., 1 HP.
 850 RPM, 7.6 Amps
 Use Series-D Plates.

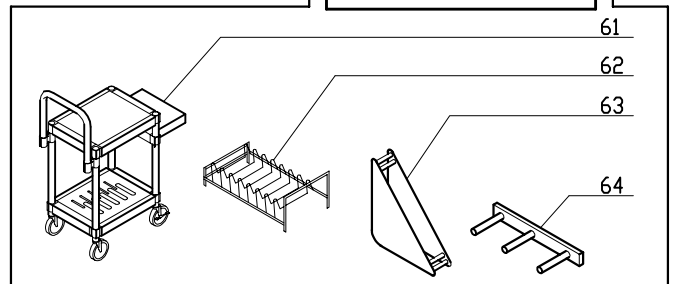


* RA604E Motor is no longer available.
 Order number SI94565, R611, 117770, 29620, and four BX658 screws.



ACCESSORIES

Use only cutting plates listed on the "Series D" Chart.



INDEX	REF.	DESIGNATION	Pricelist in : USD
1	RA443	Pad,Rear	
2	RA441	Support/Pad,Front	
3	RA406	Motor Support	
4	407233	(D) Front Data Plate, R6X	
5	RA418	Green "On" Switch Assy	
6	RA419	Red "Stop" Switch Assy	
7	RA441.1	Gasket	
8	RA441.2	Metal Plate	
9	RA442	Support,Magnetic Switch	
10	C420	Mag Swtch w/Hse (single)	
11	RA698	R6X Motor Base Assy	
12	R611	Motor Support Seal	
13	RA489	O Ring, Seal Support	
14	RA467	Seal Assembly (Seal Support)	
15	RA455	Plate, Motor Mounting	
16	R604S	Seal, Motor	
17	R492A	Shaft Pin (new style)	
18	S194565	(D) Motor R4X/R6X Low Profile	
19	S17586350	(D) Run Cap R4X/R6X	
20	R662	Bearing, Motor Top	
21	R237	6203 Bearing R2 Top/Btm	
22	S16213632	(D) Start Cap. R4X/R6X	
23	117770	(D) Din Rail 2"L, R4/R6 'D'	
24	S18388701	(D) Electronic Switch R4X/R6X	
25	R4911	Circuit Breaker/R4X/10A	
26	RA494	Baffle	
27	RA493	Base	
28	29620	(E) Plastic Base, Low Profile	
29	RA402	Foot	
30	BX658	Base Bolt W/Washer	
31	RA490	Strain Relief	
32	R496	Cord W/Plug (R4X,S,P,Y)	
33	R664S	Relay DPST	
34	RA604E	No longer available	
35	R4907	Run Capacitor R4X	
36	R662	Bearing, Motor Top	
37	R237	6203 Bearing R2 Top/Btm	
38	R4906	Start Capacitor R4X Mtr	
39	CL569	Pusher Knob	
40	CL576	Large Pusher Assembly	
41	CL588	Insert, Plastic	
42	29695	(D) Hinge Bracket	
43	29102	(D)Bracket-Pusher Return Assy	
44	100581	(K)Bushing for Spring	
45	100556	Description NA	
46	118374	(K)Pivot, Pusher Return Bracket	
47	29696	(D)Cont Feed Lead Assy W/Extra Safety	
48	118324	(L)Small Pusher	
49	118376	(D)Cont Feed Lead w/Extra Safety	
50	CL523	Hinge Pin Bushing	
51	29501	(K)Lock for Feed Cover	
52	118377	(K)Extra Safety Rod	
53	27199	* (D) Cont Feed Kit W/Extra Safety/R6	
54	102690	(K)Discharge Plate	
55	CL520	Hinge Pin	
56	CL523	Hinge Pin Bushing	
57	29697	(D)Cont Feed Bowl (R6 Series D)	
58	CL573	Stud Bolt, Latch	
59	118433	(D)Locking Collar	
60	28107	(D)Locking Pin Assy	
61	R199	* Robo-Cart	
62	R255	* Plate Rack	
63	R475	* Plate Rack (Individual)	

robot coupe®

R6X #3

INDEX	REF.	DESIGNATION	Pricelist in : USD
64	CL575	* Plate Rack (wall mount)	