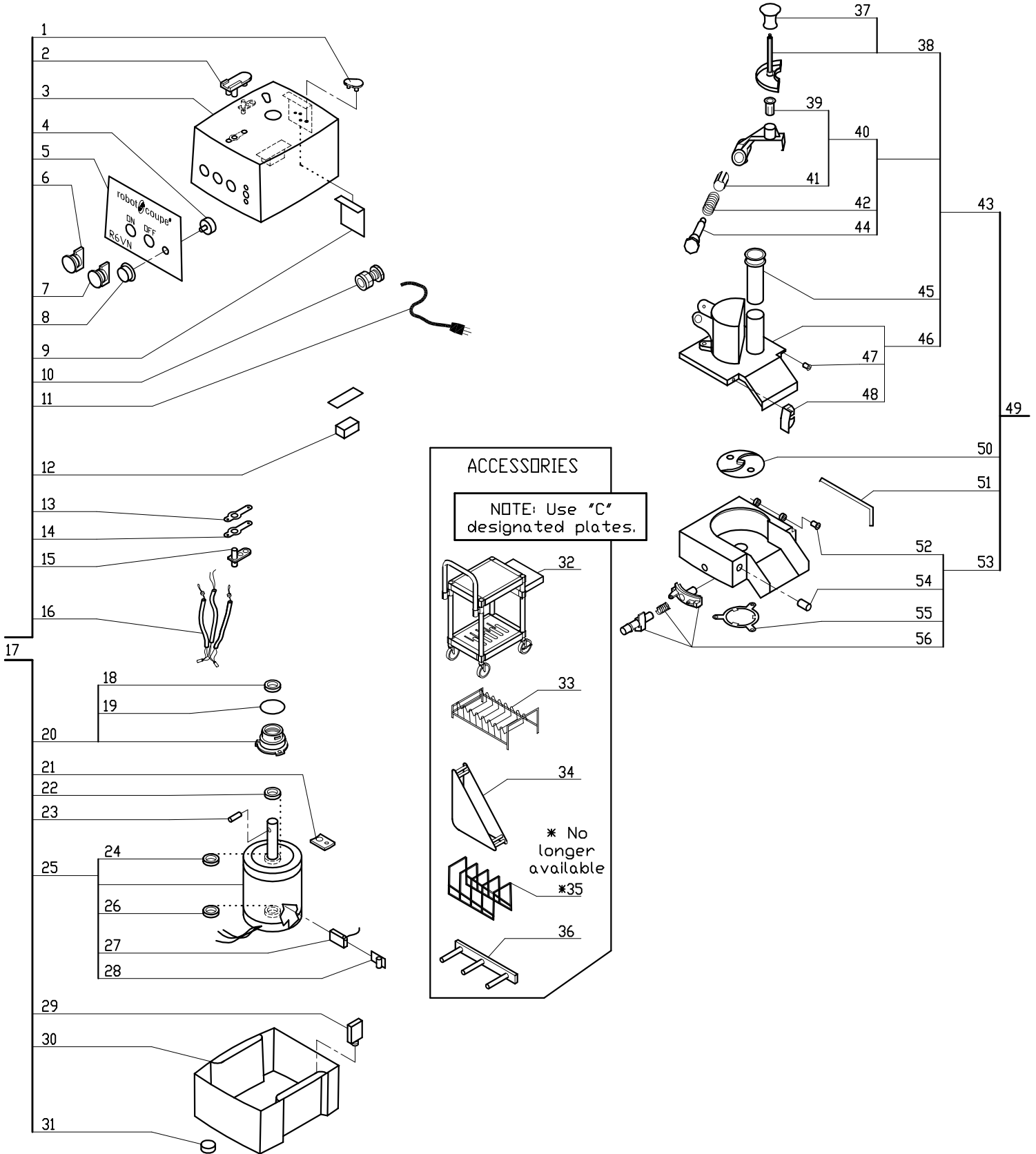
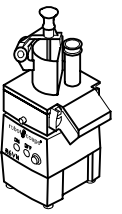


R6VC Series A

Series A, Serial Numbers R6VNxxxxxA
 Variable-Speed, 120 Volt, 1 Phase, 60Hz., 1 HP.
 370-3450 RPM, 12 Amps
 Use C Designated Plates.



ACCESSORIES

NOTE: Use "C" designated plates.

32
33
34
* No longer available
*35
36

INDEX	REF.	DESIGNATION	Pricelist in : USD
1	RA443	Pad,Rear	
2	RA441	Support/Pad,Front	
3	RA406	Motor Support	
4	RV6043	Speed Control Pot.	
5	RVA612	Front Data Plate (R6VN)	
6	RA418	Green "On" Switch Assy	
7	RA419	Red "Stop" Switch Assy	
8	RV614	Switch Knob	
9	RV6041	PC Board W/Switch	
10	RA490	Strain Relief	
11	R496	Cord W/Plug (R4X,S,P,Y)	
12	R664S	Relay DPST	
13	RA441.1	Gasket	
14	RA441.2	Metal Plate	
15	RA442	Support,Magnetic Switch	
16	C420P	Mag Swtch w/Hse (2 prl)	
17	RVA699	R6VN Motor Base Assy	
18	R611	Motor Support Seal	
19	RA489	O Ring, Seal Support	
20	RA467	Seal Assembly (Seal Support)	
21	RA455	Plate, Motor Mounting	
22	R604S	Seal, Motor	
23	R492A	Shaft Pin (new style)	
24	R662	Bearing, Motor Top	
25	RVA604	Motor Only (New Style R6VN)	
26	R1540	Bearing (6206)	
27	RVA604.2	Brush	
28	RVA604.3	Spring, Brush	
29	RB497	15amp Breaker (CSA)	
30	RA493	Base	
31	RA402	Foot	
32	R199	* Robo-Cart	
33	R255	* Plate Rack	
34	R475	* Plate Rack (Individual)	
35	R476	No Longer Available	
36	CL575	* Plate Rack (wall mount)	
37	CL569	Pusher Knob	
38	CL576	Large Pusher Assembly	
39	CL588	Insert, Plastic	
40	R639M	Hinged Bracket Assy, 2 Mag	
41	CL594	Sleeve, Plastic	
42	CL581	Spring	
43	R696	Cont. Feed Lead Assy.	
44	CL580	Pusher Hinge Pin	
45	CL585	Small Pusher (167MM)	
46	R636	Cont Feed Lead	
47	CL523	Hinge Pin Bushing	
48	CL586A	Latch, upper & lower	
49	RA697	* Cont Feed Kit	
50	CL572	Discharge Plate	
51	CL520	Hinge Pin	
52	CL523	Hinge Pin Bushing	
53	RA623	Continuous Feed Attachment	
54	CL573	Stud Bolt, Latch	
55	RA414	Locking Collar	
56	RA4901	Locking Pin Assy	