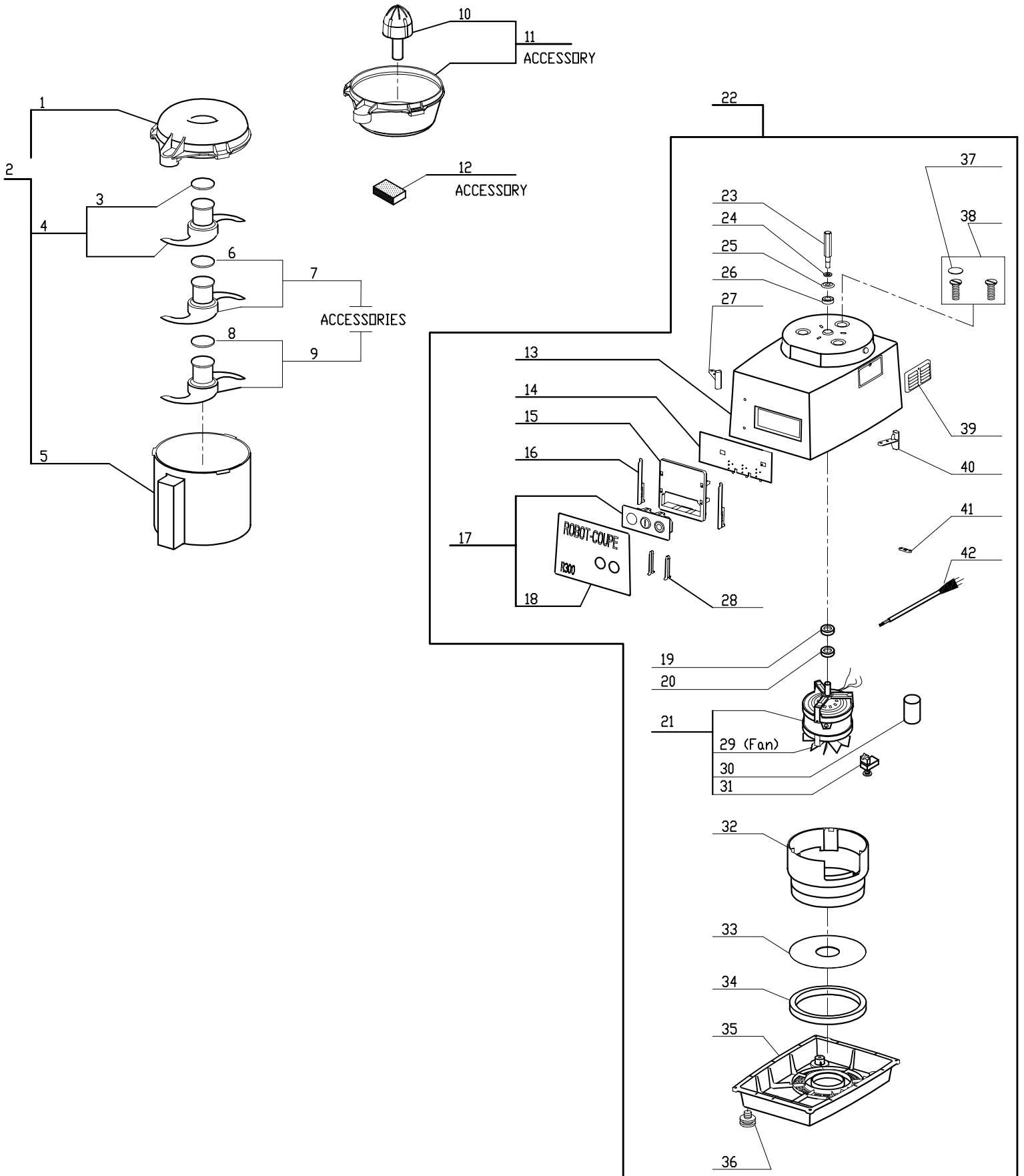
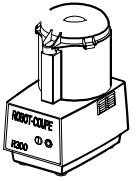


# R300B Series C

Series C Machines # 258xxxxx03

1- Speed, 120 Volt, 1 Phase, 60Hz., 1/2 HP.  
1725 RPM, 9 Amps





## R300B #3

INDEX	REF.	DESIGNATION	Pricelist in : USD
1	R3031N	Bowl Lid (New Style)	
2	R3032N	* Bowl Kit (New Style)	
3	R3030	Cap Only, R301 S. Blade	
4	R3029	* S Blade (Straight)	
5	R3028N	Plastic Bowl	
6	R3030	Cap Only, R301 S. Blade	
7	27135	* (C) Fine Serr. Blade R300,R301U "C"	
8	R3030	Cap Only, R301 S. Blade	
9	27065	* (C) Coarse Serr. Blade R300,R301U "C"	
10	R30230.1	Juicer Cone	
11	R3091	* Juicer Kit	
12	R248	Honing Stone	
13	39079	(C) Motor Support R300 Series "C"	
14	103680	(C) Control Board R300 Series "C"	
15	102911	(C) PC Board Supp. R300,R301U Series "C"	
16	117703	(K)Control Board Retaining Pin	
17	29935	(C) Switch Panel Assy R300 "C"	
18	407571	(C) Data Plate R300 "C"	
19	R1716	Motor Support Seal	
20	R1716	Motor Support Seal	
21	R3006A	Motor (B) (Fan Opp Shaft)	
22	22270	(C) Motor Base Assy R300 Series "C"	
23	R3064U	Shaft Extension, Motor	
24	100096	(C) Spacer R300,R301U Series C	
25	R3065U	Deflector Washer SS	
26	R3072U	Spacer	
27	29441	(C) Reed Switch, R300,R301U Series "C"	
28	102913	(C) Button Block Retainer R300,R301U "C"	
29	R110.1	Fan Blade Only(R100,CL30,CL50,R300#B)	
30	R3012U	Capacitor/180MF 120/160	
31	R3009U	Relay MTRPH - 16/39	
32	R3005A	Baffle(Round)	
33	103761	(C) Screen R300,R301U Series C	
34	R106	Bottom Cushion Bushing	
35	39078	(C) Base R300 Series "C"	
36	R3001	Foot, Black	
37	BX3026	Screw Cover	
38	29298	MOT SUP SCREWS ASS B	
39	R3022	Grill	
40	29441	(C) Reed Switch, R300,R301U Series "C"	
41	R233	Strain Relief	
42	503477	(C) Power Cord R300,R301U Series C	