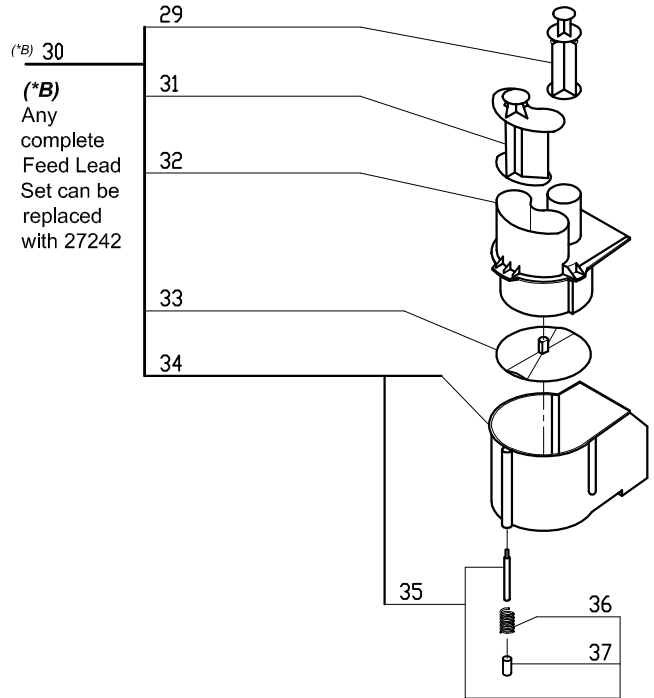
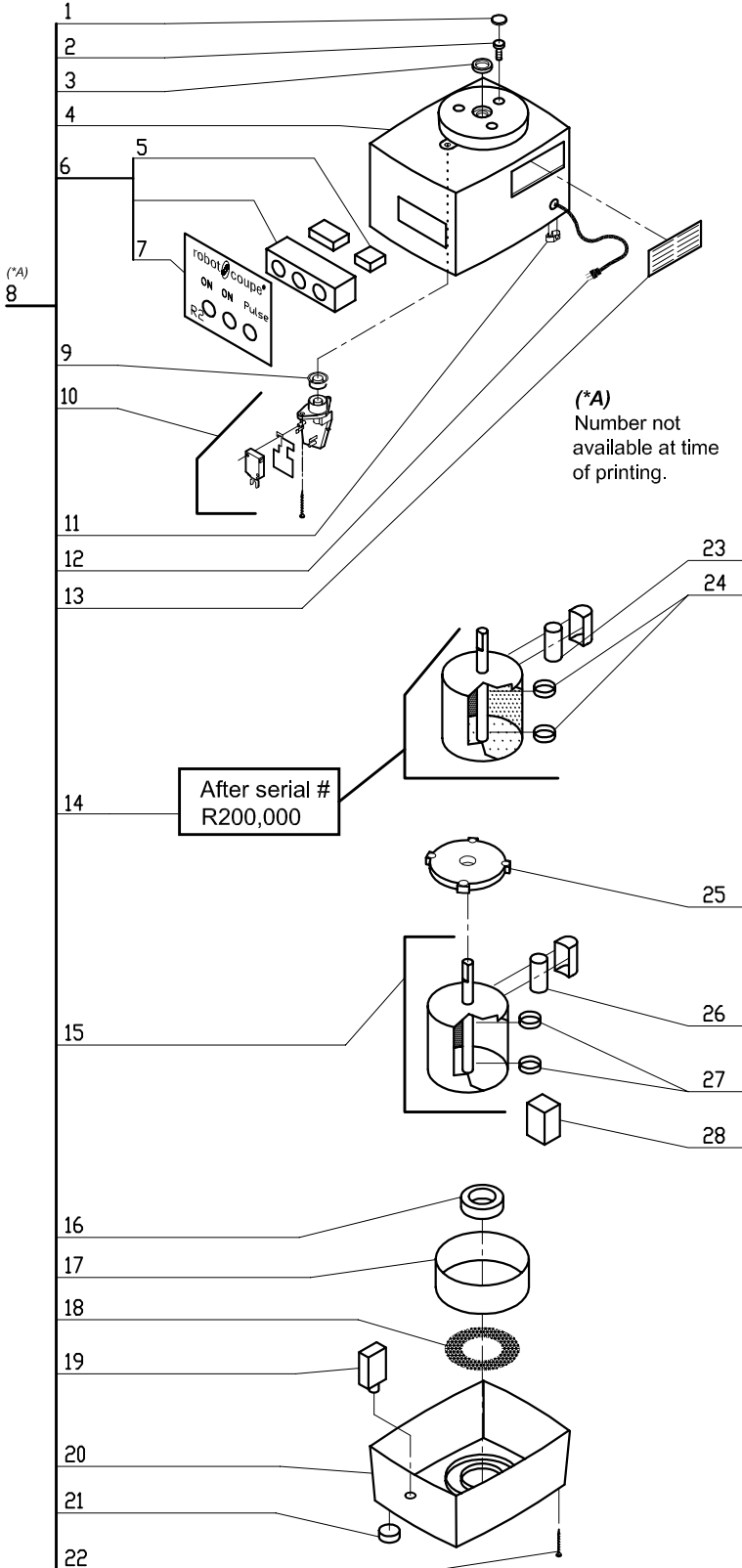
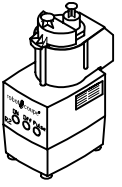
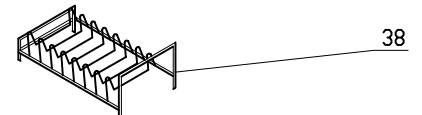


Serial Numbers-244xxxxx03 and up  
 1-Speed, 120 Volt, 1 Phase, 60Hz., 1/2 HP.  
 1725 RPM, 7 Amps



ACCESSORIES





## R2C #3

| INDEX | REF.      | DESIGNATION                                  | Pricelist in : USD |
|-------|-----------|--|--------------------|
| 1     | R262      | Screw Cover                                  |                    |
| 2     | R232A     | Screw (Motor - MS)                           |                    |
| 3     | R118      | Motor Support Seal                           |                    |
| 4     | 39108     | (B) R2N Motor Support, 3qt                   |                    |
| 5     | R274      | Pulse Switch                                 |                    |
| 6     | 29985     | (B) Switch Block Assy (R2N)                  |                    |
| 7     | Number NA | Description NA                               |                    |
| 8     | Number NA | Description NA                               |                    |
| 9     | R225      | Rubber O Ring (Black)                        |                    |
| 10    | R115K     | Safety Switch Assembly                       |                    |
| 11    | R104      | Strain Relief                                |                    |
| 12    | R240      | Cord with Plug                               |                    |
| 13    | R276A     | Louvre (mtl) W/Rivits                        |                    |
| 14    | R239      | Mtr F/C 1/3HP 115V/6HZ                       |                    |
| 15    | R239D     | Motor, EM                                    |                    |
| 16    | R265      | Bottom Cushion Bushing                       |                    |
| 17    | R278A     | Baffle                                       |                    |
| 18    | R277A     | Screen Kit                                   |                    |
| 19    | R286      | 8amp Breaker (R2ANN)                         |                    |
| 20    | 104124    | (B) R2 Base, Gray                            |                    |
| 21    | R101      | Foot   |                    |
| 22    | R119      | Screw (Base-MS 3.9x19)                       |                    |
| 23    | R222      | Capacitor F/C Mtr (R2N)                      |                    |
| 24    | R237      | 6203 Bearing R2 Top/Btm                      |                    |
| 25    | R239D.3   | Adapter Plate, EM                            |                    |
| 26    | R239D.2   | Capacitor                                    |                    |
| 27    | R237      | 6203 Bearing R2 Top/Btm                      |                    |
| 28    | R239D.1   | Relay  |                    |
| 29    | 103281    | (B) Small Pusher                             |                    |
| 30    | 27242     | * (B) R2N Cont Feed Kit, Gray                |                    |
| 31    | 103280    | (B) Large Pusher                             |                    |
| 32    | 118592    | (B) R2 Cont Feed Lead, Gray (replaces white) |                    |
| 33    | 103288    | (B)Discharge Plate                           |                    |
| 34    | 102699    | (B) R2 Cont Feed Attach, Gray                |                    |
| 35    | R242      | Pin Assy for Plastic Bowl                    |                    |
| 36    | R1776     | Spring                                       |                    |
| 37    | Number NA | Description NA                               |                    |
| 38    | R255      | * Plate Rack                                 |                    |