

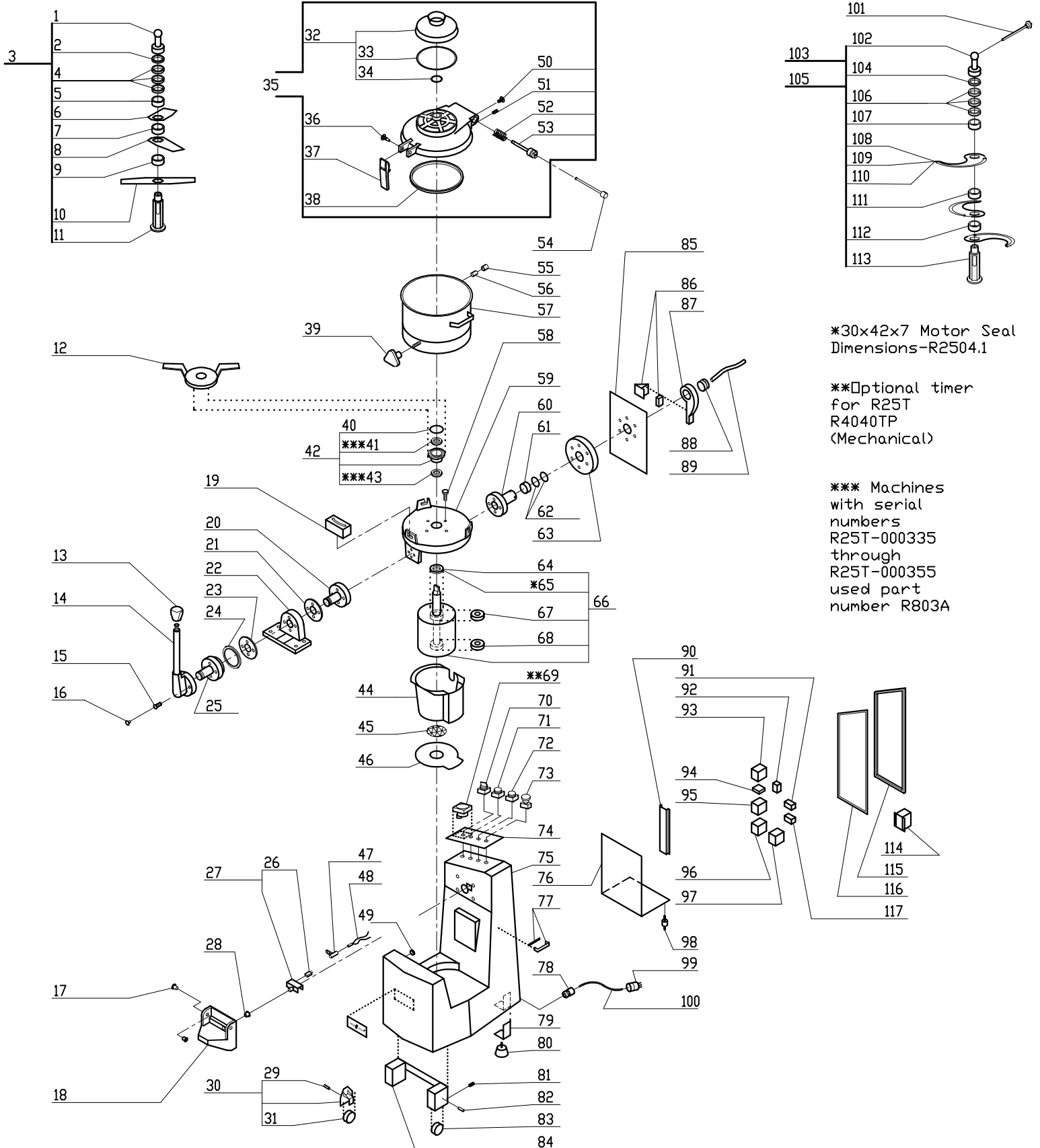
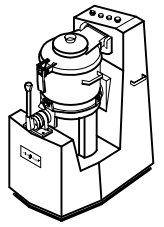
R25T-300 Series

300 Series, Serial Numbers R25T-300 and up

2 Speed, 208-240 Volt, 3 Phase, 60Hz.,

Low Speed- 1725 RPM, 19.0 Amps, 6.5 HP.

High Speed- 3450 RPM, 23.0 Amps, 9 HP.



*30x42x7 Motor Seal
Dimensions-R2504.1

**Optional timer
for R25T
R4040TP
(Mechanical)

*** Machines
with serial
numbers
R25T-000335
through
R25T-000355
used part
number R803A

| INDEX | REF. | DESIGNATION | Pricelist in : USD |
|-------|---------|----------------------------|--------------------|
| 1 | R2538 | Blade Locking Nut | |
| 2 | R810 | Rilsan Spacer 4MM | |
| 3 | R2545 | *Dough Blade Assembly | |
| 4 | R811 | Rilsan Spacer 11MM | |
| 5 | R812 | Aluminum Spacer 27MM | |
| 6 | R2545.1 | Top Dough Blade | |
| 7 | R812 | Aluminum Spacer 27MM | |
| 8 | R2545.2 | Middle Dough Blade | |
| 9 | R812 | Aluminum Spacer 27MM | |
| 10 | R2545.3 | Bottom Dough Blade | |
| 11 | R1539N | Blade Support | |
| 12 | R25159 | Wrench | |
| 13 | R2594A | Locking Lever Knob | |
| 14 | R2596A | Locking Lever/Tilt | |
| 15 | R25133 | Tilt Hndle Screw/6.3 8.3 | |
| 16 | R1034 | Cover,Screw (MS 21MM) | |
| 17 | R1547 | Lid Hinge Pin Bushing | |
| 18 | R2520A | Lid Mounting Hinge | |
| 19 | R2555 | Blade Dis Assembly Tool | |
| 20 | R2584 | Front Support Hub/Tilt | |
| 21 | R2585 | Locking Disc/Tilt | |
| 22 | R2586 | Front Pivot Support/Tlt | |
| 23 | R2585 | Locking Disc/Tilt | |
| 24 | R25161 | Friction Ring | |
| 25 | R2588 | Lever Locking Nut/Tilt | |
| 26 | R114 | Switch Only | |
| 27 | R2534A | Mechanical Switch Assy. | |
| 28 | R2534A1 | Bushing For Mech. Sw. | |
| 29 | R1572 | Axle, Wheel | |
| 30 | R1549 | Wheel Assy. | |
| 31 | R1803 | Wheel | |
| 32 | R1045 | Transparent Cvr, AssyLid | |
| 33 | R1044 | O Ring, Trans Lid Cover | |
| 34 | R1038 | O Ring, Lid | |
| 35 | R2518B | * Lid Assembly New Style | |
| 36 | R6031 | Screw, Lid Sec.Hndl (Hard) | |
| 37 | R2599A | Lid Locking Assy | |
| 38 | R2517A | Lid Seal | |
| 39 | R1510N | Bowl Securing Knob (AL) | |
| 40 | R1518 | "O" Ring | |
| 41 | R803 | Motor Support Seal | |
| 42 | R2514A | Motor Support Seal Assy | |
| 43 | R803 | Motor Support Seal | |
| 44 | R2570A | Motor Cover(300 Series) | |
| 45 | R2530 | Screen, Metal | |
| 46 | R25123 | Bottom Motor Cover | |
| 47 | RA442 | Support,Magnetic Switch | |
| 48 | R25125A | Reed Switch Only | |
| 49 | R2580 | Horiz Stop Pad/Tilt | |
| 50 | R2546.1 | Screw, Lid Spring Pin | |
| 51 | R25119A | Stud For Lid W/ Screw | |
| 52 | R2550 | Lid Spring | |
| 53 | R2546 | Lid Spring Pin | |
| 54 | R2521A | Lid Mounting Pin | |
| 55 | R25127 | Bowl Magnet Cap | |
| 56 | R25126A | Bowl/Magnet | |
| 57 | R2516A | * Bowl New Style | |
| 58 | R25120C | F.H. Screw S.S. | |
| 59 | R2569 | Motor Support/Tilt Only | |
| 60 | R2583 | Mtr Support Hub/Tilt | |
| 61 | R2582.1 | Spacer | |
| 62 | R2582.2 | "O" Ring | |
| 63 | R2582 | Rear Hub Support/Tilt | |

| INDEX | REF. | DESIGNATION | Pricelist in : USD |
|-------|---------|---------------------------------|--------------------|
| 64 | R1004 | Top Seal, Motor | |
| 65 | R2504.1 | Motor Seal 30x42x7 | |
| 66 | R2504A | Motor 220V 3 Ph | |
| 67 | R1540 | Bearing (6206) | |
| 68 | R25162 | Bottom Bearing (R25T,TP) | |
| 69 | R4040A | Timer (Electro-Mech.) | |
| 70 | R2526A | Switch w/Knob (R25T R40T) | |
| 71 | R4033G | Run Button (Green) | |
| 72 | R4033B | Pulse Button(Black) | |
| 73 | R1015 | Switch, Stop (Red) | |
| 74 | R25117C | Data Plate (New Style) | |
| 75 | R2581A | Base | |
| 76 | R2528A | Relay Mounting Bracket | |
| 77 | R1506 | Handle | |
| 78 | R1579 | Strain Relief (UL) | |
| 79 | R2506 | Foot Support | |
| 80 | R1503 | Foot | |
| 81 | R1572.1 | Axle Sleeve | |
| 82 | R1572A | Axle Bolt | |
| 83 | R1803 | Wheel | |
| 84 | R2578 | Stabilizing Bar | |
| 85 | R2577 | Backing Plate/Tilt | |
| 86 | R2574A | Vertical Stop Pad & Support | |
| 87 | R2576A | Vertical Stop Arm | |
| 88 | R2566 | Nut, Plastic | |
| 89 | R4072TP | Cord Harness | |
| 90 | R1085 | Denrail 5" | |
| 91 | R1090 | Control Relay, Run(DPST) | |
| 92 | R1069 | Terminal Block(Canadian) | |
| 93 | R1088 | Relay | |
| 94 | R1079 | Relay Mech. Interlock | |
| 95 | R25141 | Relay (H-R25T L-R40T) | |
| 96 | R1557 | Relay | |
| 97 | R2535A | Overload UL (R25T) | |
| 98 | R860 | Brake Support Mount Bolt | |
| 99 | R1577 | 30amp Plug (R15 R25T) | |
| 100 | R25142 | Cord (R25T R40T) | |
| 101 | R2551 | Push Rod | |
| 102 | R2538 | Blade Locking Nut | |
| 103 | R2537N | * Straight Blade Assy(3Bld) | |
| 104 | R810 | Rilsan Spacer 4MM | |
| 105 | R2541N | * Serrated Blade Assy(3Bld) | |
| 106 | R811 | Rilsan Spacer 11MM | |
| 107 | R812 | Aluminum Spacer 27MM | |
| 108 | R2543 | Blade Only (Smooth) | |
| 109 | R2542 | Serrated Blade Only | |
| 110 | 119182 | (T) Unsharpened Blade R25T/R40T | |
| 111 | R812 | Aluminum Spacer 27MM | |
| 112 | R812 | Aluminum Spacer 27MM | |
| 113 | R1539N | Blade Support | |
| 114 | R1068 | Transformer 440V/220V | |
| 115 | R2572A | Back Access Cover | |
| 116 | R2502A | Back Access Cover Seal | |
| 117 | R1090 | Control Relay, Run(DPST) | |