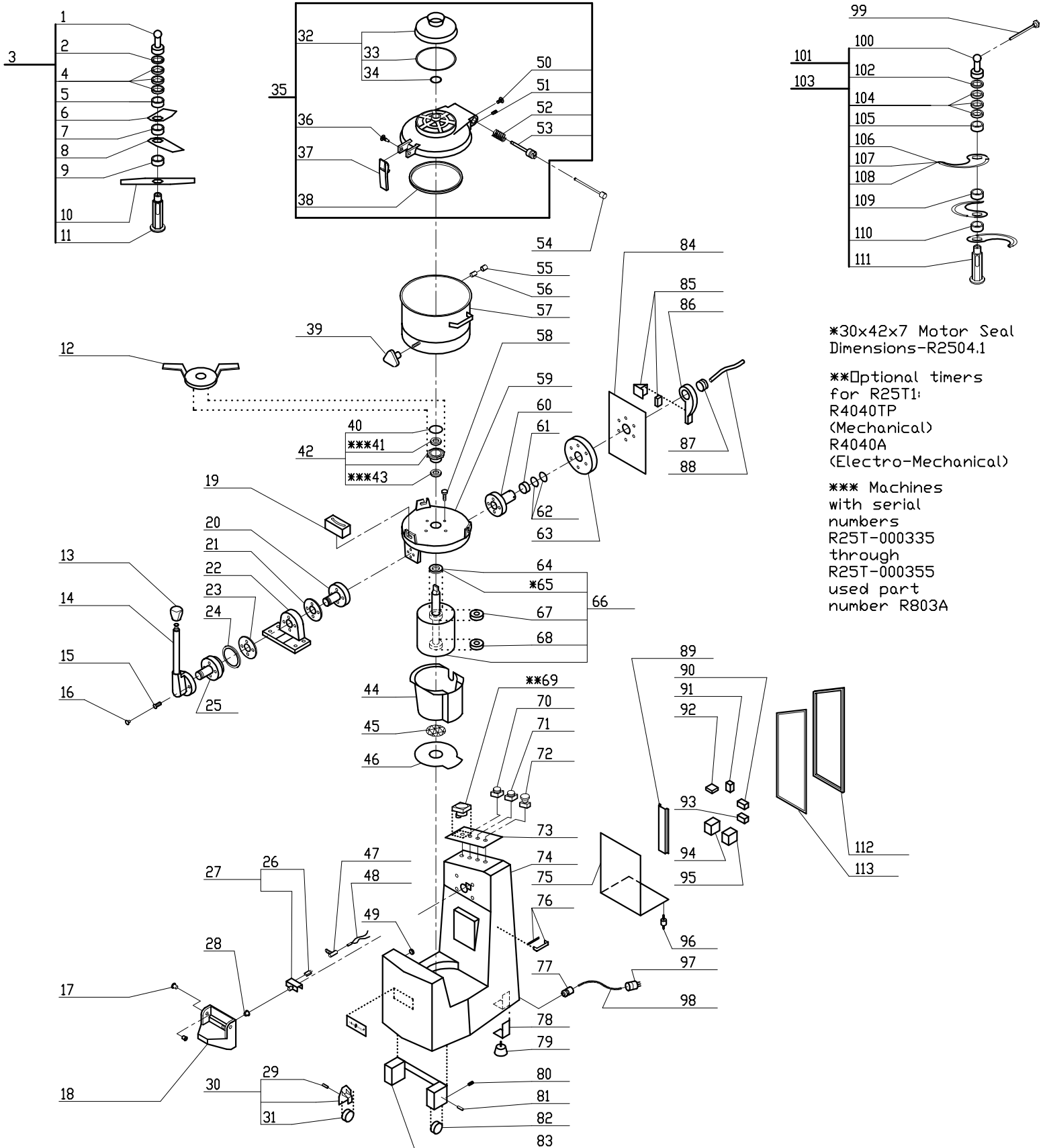
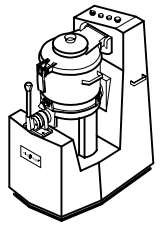


R25T1-300 Series

300 Series, Serial Numbers LP-0100 and up

1 Speed, 208-240 Volt, 3 Phase, 60Hz.,
Speed- 1725 RPM, 19.0 Amps, 6.5 HP.



*30x42x7 Motor Seal
Dimensions-R2504.1

**Optional timers
for R25T1:
R4040TP
(Mechanical)
R4040A
(Electro-Mechanical)

*** Machines
with serial
numbers
R25T-000335
through
R25T-000355
used part
number R803A