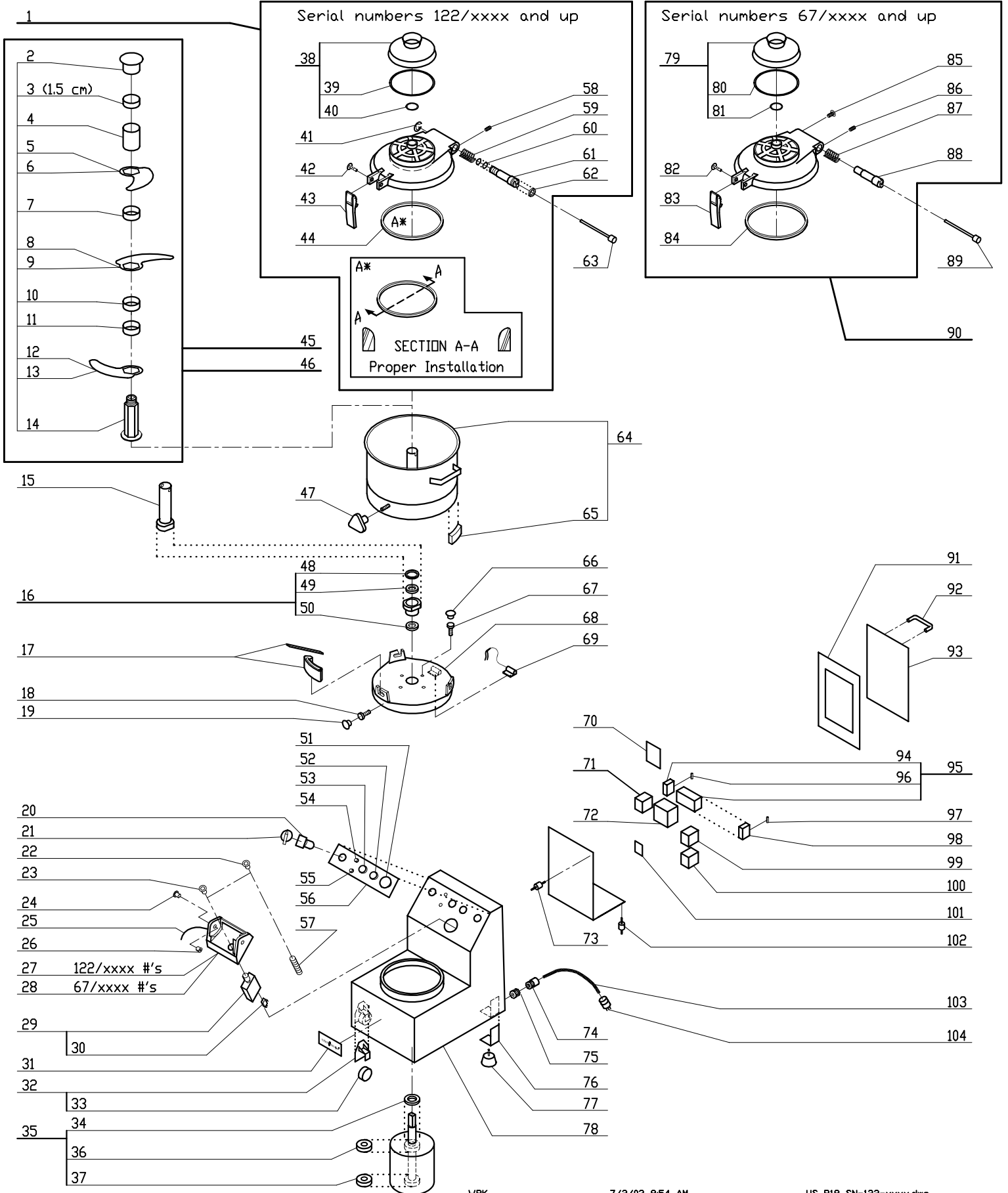
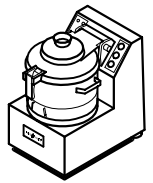


2- Speed, 208-240 Volt, 3 Phase, 60Hz.,
 Low Speed- 1725 RPM, 20 Amps, 4.5 HP.
 High Speed- 3450 RPM, 20 Amps, 6.0 HP.
 Serial Numbers 122/xxxx



INDEX	REF.	DESIGNATION	Pricelist in : USD
1	R1037E	*Lid Assembly (Pin w/Seal)	
2	R1078	Lock Nut, Blade	
3	R1077	Plastic Spacer (10 cm)	
4	R1076A	50MM S. Spacer	
5	R1072	Blade Only, St.	
6	R1072A	Blade Only, Ser.	
7	R1863	Spacer 30MM	
8	R1072	Blade Only, St.	
9	R1072A	Blade Only, Ser.	
10	R8U009	15 mm S.S. Spacer	
11	R8U009	15 mm S.S. Spacer	
12	R1072	Blade Only, St.	
13	R1072A	Blade Only, Ser.	
14	R1071	Blade Support	
15	CL689	Tool, Seal Removal	
16	R1027	Seal Assy, Motor Support	
17	R1075	Tool, Blade Locking	
18	R1024	Screw, Motor Support	
19	R1034	Cover, Screw (MS 21MM)	
20	R1080	2 Speed Drum Switch	
21	R1009	Switch Knob, Speed Selec.	
22	R1065A	Bushing 25M (Prox Sw)	
23	R1065C	Bushing	
24	R1547A	Bushing (New Style)	
25	R1022	String, Lid Hinge Pin Se	
26	R1020	Stop, Lid	
27	R1019B	Bracket, Lid Mount	
28	R1019A	Bracket/Lid Mount(Round)	
29	R2534A	Mechanical Switch Assy.	
30	R114	Switch Only	
31	R1802	Front Name Plate	
32	R1549	Wheel Assy.	
33	R1803	Wheel	
34	R1004	Top Seal, Motor	
35	R1807	Motor (RCSA)	
36	R1540	Bearing (6206)	
37	R25162	Bottom Bearing (R25T, TP)	
38	R1045	Transparent Cvr, AssyLid	
39	R1044	O Ring, Trans Lid Cover	
40	R1038	O Ring, Lid	
41	R1012	Eclip	
42	R1036A	Screw, Lid Lever	
43	R1091A	Lever Latch Assy	
44	R1032A	Seal, Lid	
45	R1870	* Blade Assy Comp(Straight	
46	R1871	* Blade Assy Comp(Serrated	
47	R1030	Knob, Bowl Securing	
48	R1029	Shield, Motor Support	
49	R611	Motor Support Seal	
50	R611	Motor Support Seal	
51	R1015	Switch, Stop (Red)	
52	R3067U	On Push Button/Green	
53	R3063U	Pulse Push Buttn, Black	
54	R1017	Light, Red	
55	R1016	Light, Green	
56	R1854	Data Plate	
57	R1051	Proximity Switch (24V)	
58	R1043A	Screw W/ Nut, Lid Sen. (Mech Sw.)	
59	R1040A	Spring, Lid	
60	R1083	Seal (JF410A)	
61	R1039A	Bolt, Lid Spring	
62	R1082	Seal (27x36x6.5)	
63	R1018	Pin, Lid Hinge	

INDEX	REF.	DESIGNATION	Pricelist in : USD
64	R1826	* Bowl	
65	R1049	Bowl Magnet Assy.	
66	R1823	Screw Cover	
67	R1822	Screw, Motor Support	
68	R1821	Motor Support	
69	R10252	Magnetic Switch Assy	
70	R1061	P/C Board	
71	Number NA	Description NA	
72	R1875	Transformer	
73	R1062	Bolts, Shock Absorbing	
74	R1008A	Strain Relief (ETL&P)	
75	R1057	Gromet, Elec Cord	
76	R1006	Bracket, Foot	
77	R1503	Foot	
78	R1801	Base	
79	R1045	Transparent Cvr, AssyLid	
80	R1044	O Ring, Trans Lid Cover	
81	R1038	O Ring, Lid	
82	R1036A	Screw, Lid Lever	
83	R1091A	Lever Latch Assy	
84	R1032	Seal, Lid	
85	R1041	Screw, Bolt Locking	
86	R1043A	Screw W/ Nut, Lid Sen. (Mech Sw.)	
87	R1040	Spring, Lid	
88	R1039	Bolt, Lid Spring	
89	R1018	Pin, Lid Hinge	
90	R1037A	* Lid Assembly	
91	R1809	Gasket, Access Cover	
92	R1084	Handle	
93	R1810	Cover, Back Access	
94	R1053	Fuse Holder	
95	R1054	Fuse Block w/Fuse & Hold	
96	R1880	Fuse 20A 400V	
97	R1880	Fuse 20A 400V	
98	R1882	Terminal Block (Canada Only)	
99	Number NA	Description NA	
100	Number NA	Description NA	
101	Number NA	Description NA	
102	R1058	Bolts, Shock Absorb.	
103	R25142	Cord (R25T R40T)	
104	R1577	30amp Plug (R15 R25T)	