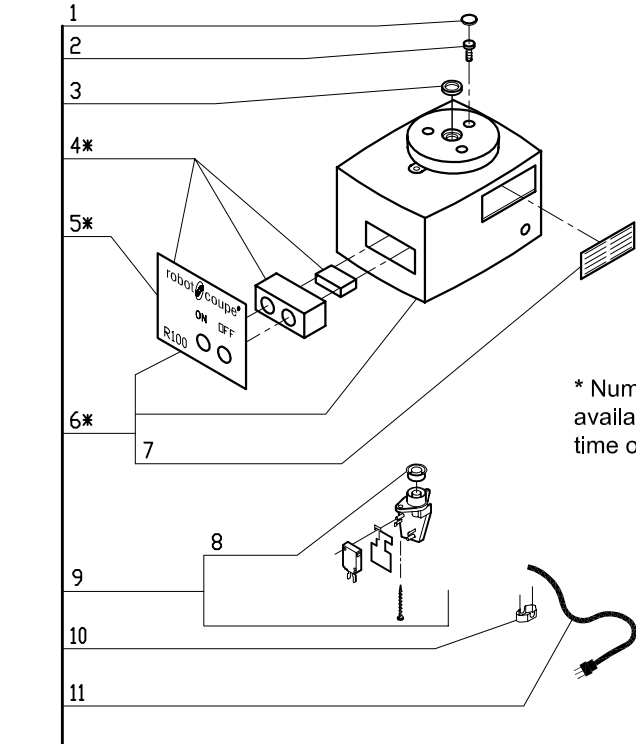
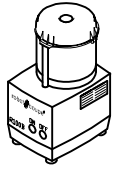
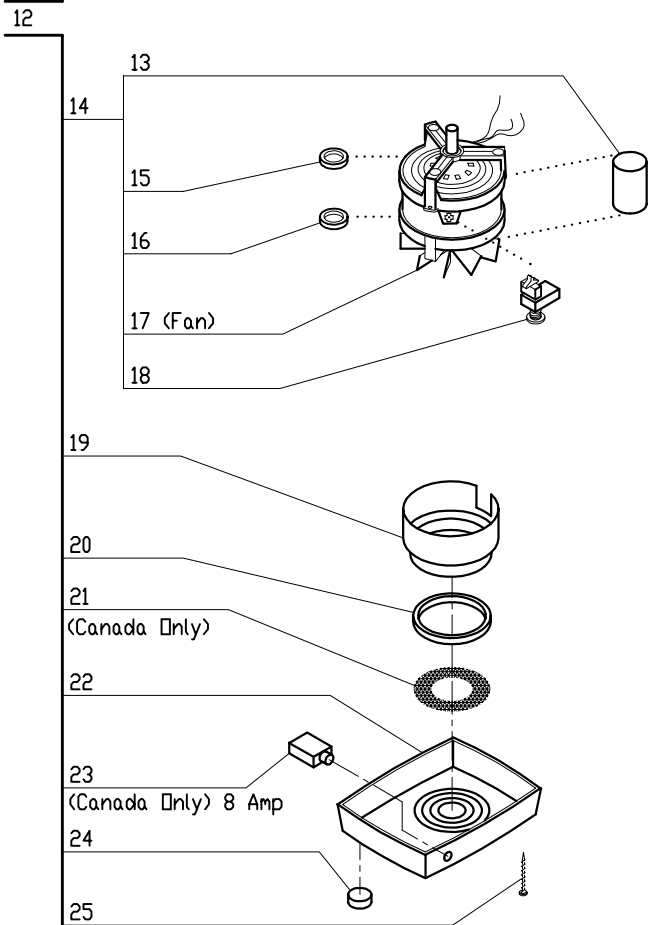
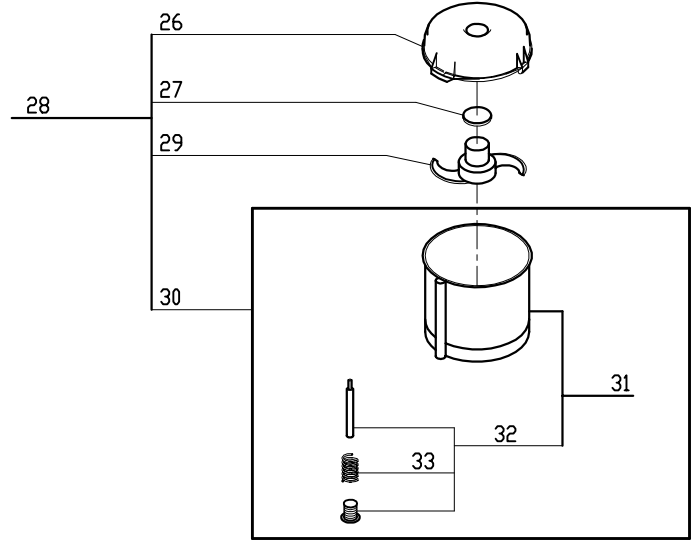


R100BCLR

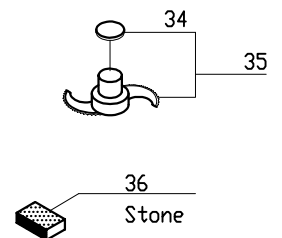
Serial Numbers 12/xxxxx and 012xxxxx03
 1-Speed, 120 Volt, 1 Phase, 60Hz., 5/16 HP.
 1725 RPM, 7 Amps



* Number not available at time of printing.



ACCESSORIES





R100BCLR

INDEX	REF.	DESIGNATION	Pricelist in : USD
1	R121	Screw Cover	
2	R120	Motor Support Screw	
3	R118	Motor Support Seal	
4	Number NA	Description NA	
5	Number NA	Description NA	
6	Number NA	Description NA	
7	R276A	Louvre (mtl) W/Rivits	
8	R225	Rubber O Ring (Black)	
9	R115K	Safety Switch Assembly	
10	R104	Strain Relief	
11	R240	Cord with Plug	
12	R162	Motor Base Assy	
13	R3012U	Capacitor/180MF 120/160	
14	R110	Motor	
15	R159	Top Bearing	
16	R1715	6201 Bearing	
17	R110.1	Fan Blade Only(R100,CL30,CL50,R300#B)	
18	R3009U	Relay MTRPH - 16/39	
19	R107	Baffle	
20	R106	Bottom Cushion Bushing	
21	R123	Description NA	
22	R102	Base	
23	R286	8amp Breaker (R2ANN)	
24	R101	Foot	
25	R119	Screw (Base-MS 3.9x19)	
26	R204	Cutter Bowl Lid	
27	R3030	Cap Only, R301 S. Blade	
28	27240	* (B) R2N Clear Bowl Kit, 3qt.	
29	R155	* Smooth Blade	
30	117900	(A) 2 1/2 Qt Clear Bowl, R100	
31	117900	(A) 2 1/2 Qt Clear Bowl, R100	
32	29900	(A) Safety Rod Assy	
33	R1776	Spring	
34	R3030	Cap Only, R301 S. Blade	
35	R157	* Serrated Blade	
36	R248	Honing Stone	