

# CL55 Pusher Series D

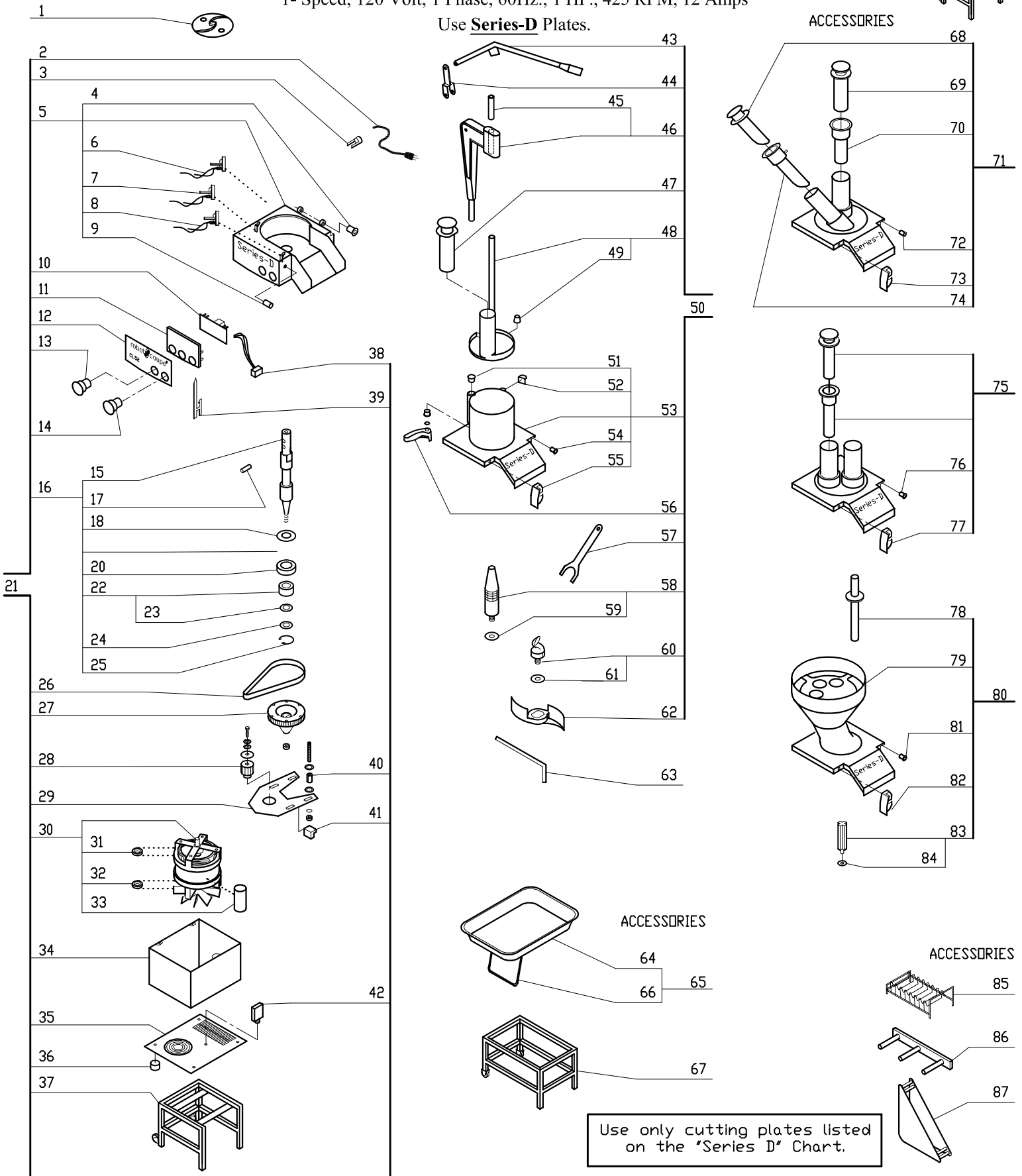
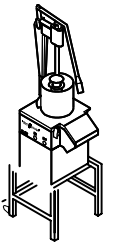
CL55 with Whole Head Feed Pusher Attachment (28103)

as standard.

Series D Machines # 1950111303T-01 and up

1- Speed, 120 Volt, 1 Phase, 60Hz., 1 HP., 425 RPM, 12 Amps

Use **Series-D** Plates.



Use only cutting plates listed on the "Series D" Chart.

INDEX	REF.	DESIGNATION	Pricelist in : USD
1	102690	(K)Discharge Plate	
2	R240	Cord with Plug	
3	507122	(M)Cord Strain Relief	
4	CL523	Hinge Pin Bushing	
5	29628	(M)Upper Housing W/Chute	
6	29451	(K)Magnetic Switch Assy	
7	29451	(K)Magnetic Switch Assy	
8	29451	(K)Magnetic Switch Assy	
9	CL573	Stud Bolt, Latch	
10	102480	(K)Control Board	
11	29533	(K)Mount Spacer for Control Board	
12	406517	(M)Front Data Plate	
13	502170	(K)On Switch (Green)	
14	502169	(K)Off Button (Red)	
15	118380	(M)Shaft Only	
16	29693	(M)Drive Shaft Assy	
17	CL592	Shaft Pin	
18	203107	(K)Seal Protector	
19	504219	(K) O Ring 42x2, CL50D	
20	507063	(K)Bearing/Upper	
21	24379	Description NA	
22	29630	(K)Bearing Assy, Lower	
23	203109	(K)Thrust Bushing	
24	203132	(K)Washer	
25	203108	(K)Bushing	
26	C411N	Belt	
27	117682	(K)Shaft Pulley,75 Teeth	
28	29532	(M)Motor Pulley-20 Teeth	
29	117689	(K)Motor Support Plate	
30	303081	(M)Motor Assy	
31	R237	6203 Bearing R2 Top/Btm	
32	R237	6203 Bearing R2 Top/Btm	
33	501599	(L) Capacitor	
34	117791	(M)S.S. Base Cover	
35	117687	(L)Bottom Cover	
36	R402F	Foot (French)	
37	CL5580	Stand	
38	29599	(K)Control Wire Connector	
39	117703	(K)Control Board Retaining Pin	
40	117692	(K)Support Plate Brace	
41	506176	(M)Capacitor Relay	
42	RB497	15amp Breaker (CSA)	
43	29710	(M)Pusher Lever	
44	103205	(M)Pusher Lever Yoke	
45	118331	(M)Pusher Slide Bushing	
46	29704	(M)Pusher Support Assy	
47	118397	(M)Small Pusher	
48	29709	(M)Large Pusher	
49	29706	(M)Pusher Stop Assy	
50	28103	* (M) Whole Head Feed Pusher Assy	
51	29707	(M)Pusher Pivot Bushing	
52	117321	(M)Pusher Guide Bushing	
53	29708	(M)Feed Lead W/O Pusher	
54	CL523	Hinge Pin Bushing	
55	29501	(K)Lock for Feed Cover	
56	29705	(M)Magnet Safety Arm	
57	118436	(M)Lock Nut Wrench	
58	CL640	Plate Locking Nut (long)	
59	R609A	Washer, Plastic	
60	29692	(M)Cabbage Plate Lock Nut	
61	R609A	Washer, Plastic	
62	117802	(M)Discharge Vane	
63	CL520	Hinge Pin	