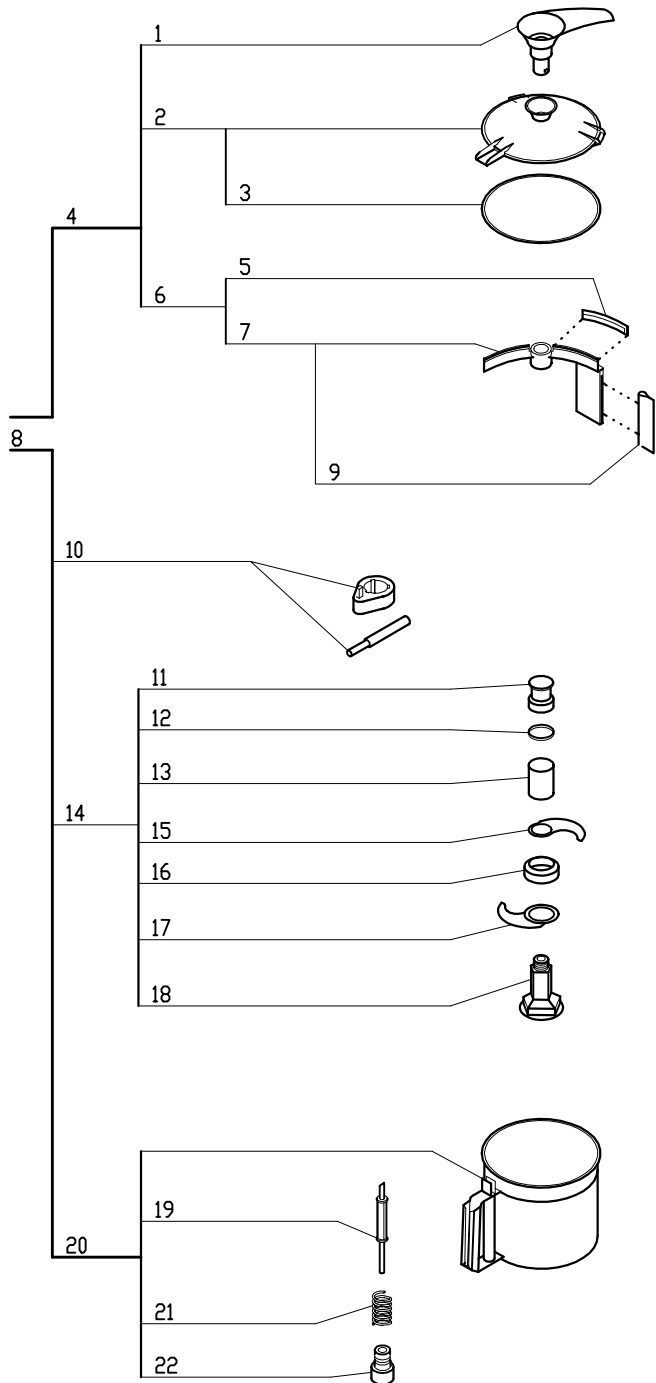


# Blixer 6V

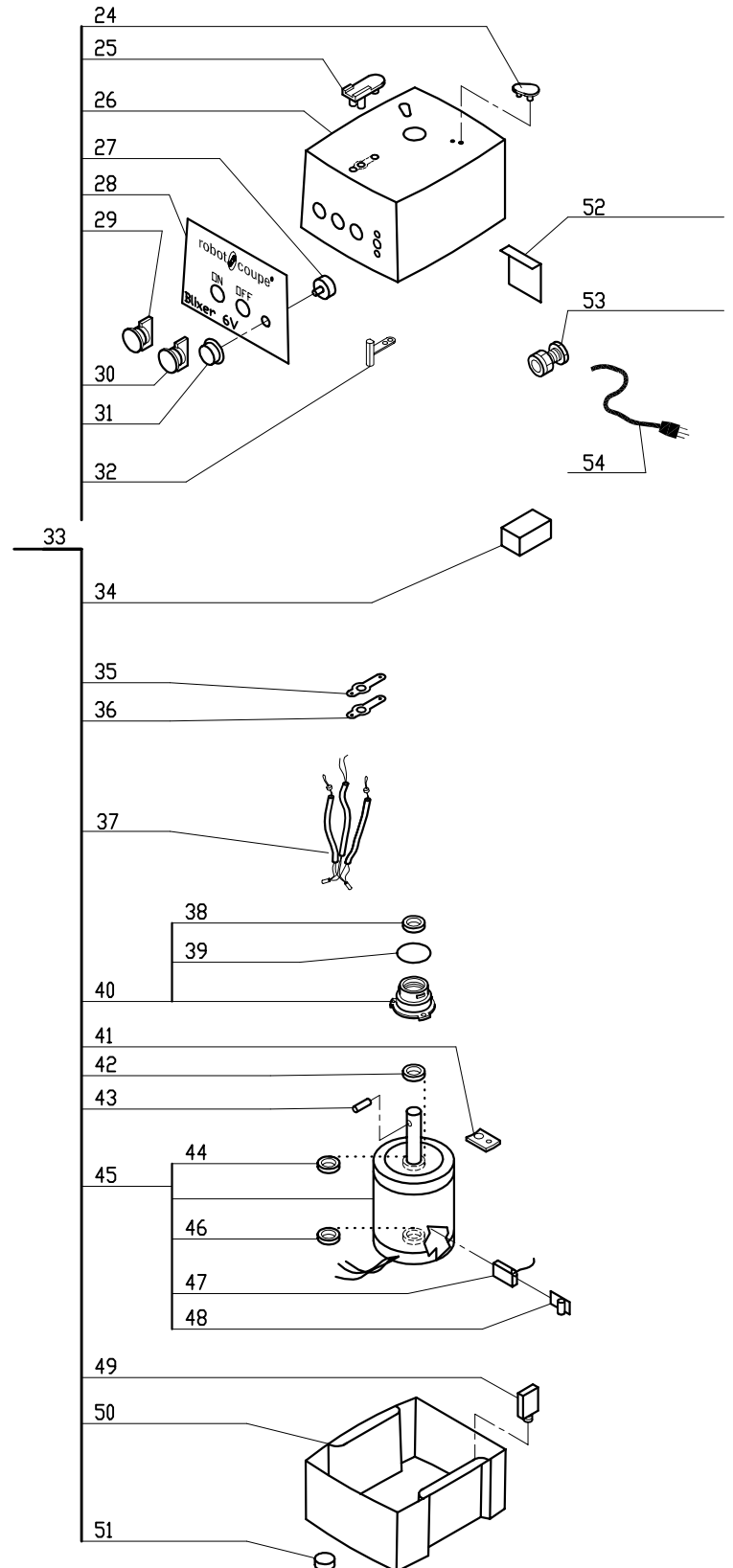
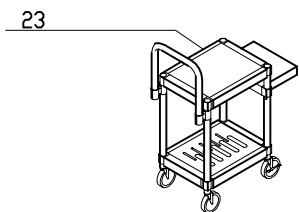
Serial Numbers 243xxxxx03 and up

Variable Speed, 120 Volt, 1 Phase, 60Hz., 1 HP.

370-3450 RPM, 12 Amps



ACCESSORIES





## Blixer 6V

INDEX	REF.	DESIGNATION	Pricelist in : USD
1	BX620.1	Handle	
2	RA420	Lid	
3	RA451	Seal,Lid	
4	BX621	Lid W/Blade Wiper Assy	
5	BX620.3	Horizontal Wipe Blade	
6	BX620	Wiper Blade Holder W/Wipers	
7	BX620.4	Wiper Blade Holder W/Vertical Wiper	
8	BX650	* 6qt Blixer Bowl Assy	
9	BX620.5	Vertical Wiper	
10	RA616	Blade Tool Assy.	
11	BX651.1	Blade Locking Nut	
12	BX651.2	5 MM Spacer	
13	BX651.3	77 MM Spacer	
14	BX651	*Blade Assy.	
15	BX651.4	Top Blade	
16	BX651.6	26 MM Spacer	
17	BX651.5	Bottom Blade	
18	BX651.7	Blade Support	
19	RA645.2	Pin, Bowl	
20	BX652	Blixer Bowl Only 6 qt.	
21	RA424.3	Spring, Bowl Pin	
22	RA424.4	Nut For Bowl Pin	
23	R199	* Robo-Cart	
24	RA443	Pad,Rear	
25	RA441	Support/Pad,Front	
26	RA406	Motor Support	
27	RV6043	Speed Control Pot.	
28	408087	(H) Front Data Plate, Blixer6V	
29	RA418	Green "On" Switch Assy	
30	RA419	Red "Stop" Switch Assy	
31	RV614	Switch Knob	
32	102391	(D) Magnetic Switch R6VN Series D	
33	BXV699	BX6V Motor Base Assy	
34	R664S	Relay DPST	
35	RA441.1	Gasket	
36	RA441.2	Metal Plate	
37	C420P	Mag Swtch w/Hse (2 prl)	
38	R611	Motor Support Seal	
39	RA489	O Ring, Seal Support	
40	RA467	Seal Assembly (Seal Support)	
41	RA455	Plate, Motor Mounting	
42	R604S	Seal, Motor	
43	R492A	Shaft Pin (new style)	
44	R662	Bearing, Motor Top	
45	RVA604	Motor Only (New Style R6VN)	
46	R1540	Bearing (6206)	
47	RVA604.2	Brush	
48	RVA604.3	Spring, Brush	
49	RB497	15amp Breaker (CSA)	
50	RA493	Base	
51	RA402	Foot	
52	RV6041	PC Board W/Switch	
53	RA490	Strain Relief	
54	R496	Cord W/Plug (R4X,S,P,Y)	