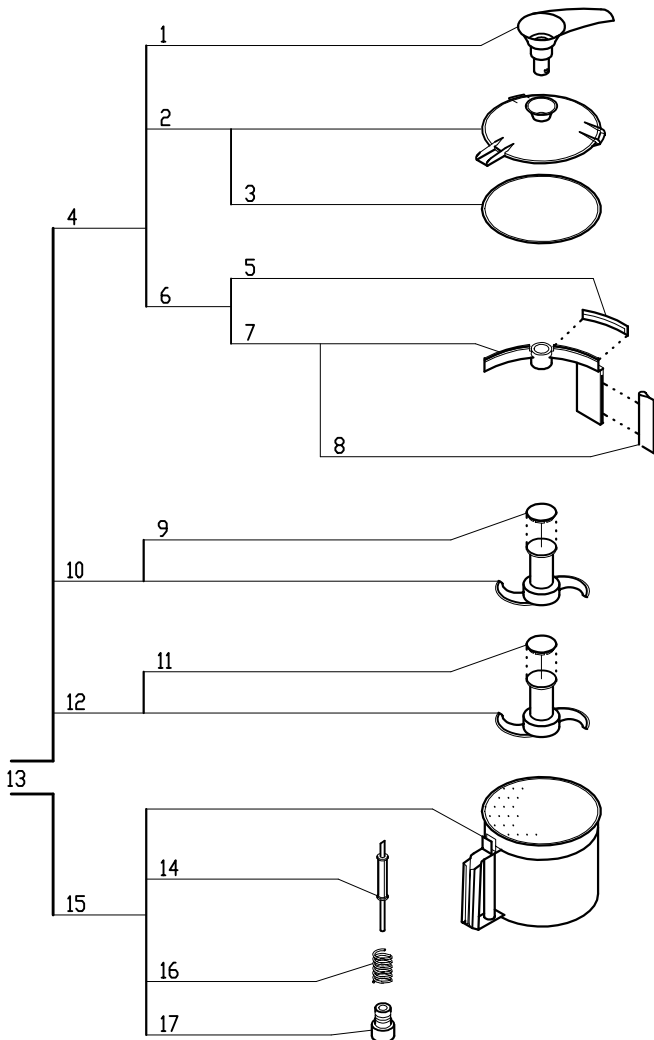


# Blixer 5

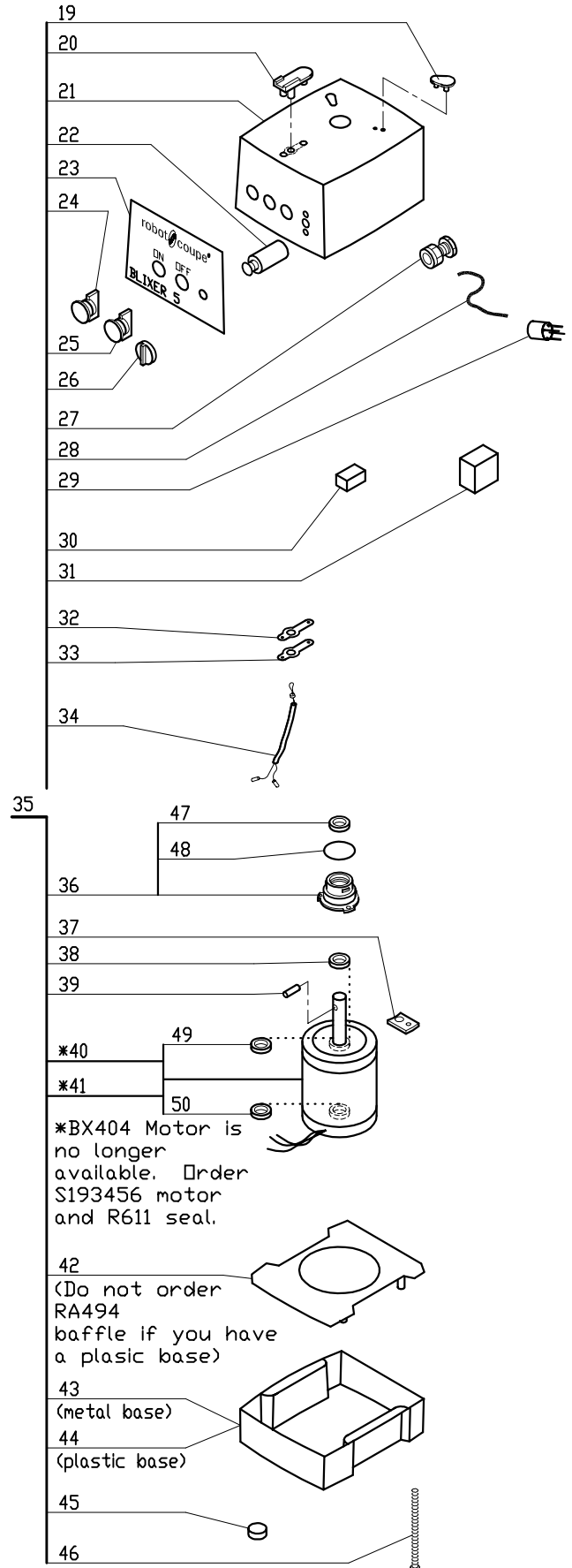
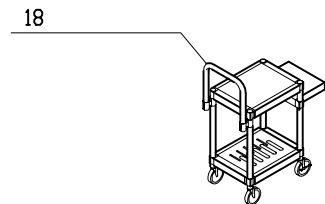
Serial Numbers 240xxxxx13

Two Speed, 220 Volt, 3 Phase, 60Hz., 2 HP.

1725-3450 RPM, 5.3/5.8 Amps



## ACCESSORIES





## Blixer 5

INDEX	REF.	DESIGNATION	Pricelist in : USD
1	BX620.1	Handle	
2	RA420	Lid	
3	RA451	Seal,Lid	
4	BX421	Lid W/Blade Wiper Assy.	
5	BX620.3	Horizontal Wipe Blade	
6	BX420	Wipe Blade Holder W/Wipers	
7	BX420.4	Wiper Blade Holder W/Vertical Wiper	
8	BX420.5	Vertical Wiper	
9	BX422.1	Cap	
10	BX422	* Blixer Blade(Fine) 4 Quart	
11	BX422.1	Cap	
12	BX422A	* Blixer Blade (Coarse) 4 Quart	
13	BX450	* 4qt. Blixer Bowl Assy	
14	RA424.2	Pin, Bowl	
15	BX452	Blixer Bowl Only 4 qt.	
16	RA424.3	Spring, Bowl Pin	
17	RA424.4	Nut For Bowl Pin	
18	R199	* Robo-Cart	
19	RA443	Pad,Rear	
20	RA441	Support/Pad,Front	
21	RA406	Motor Support	
22	R8U038	Speed Selector Switch	
23	408090	(H) Front Data Plate, Blixer5	
24	RA418	Green "On" Switch Assy	
25	RA419	Red "Stop" Switch Assy	
26	RA416	Switch Knob	
27	RA490	Strain Relief	
28	R403	Cord without Plug	
29	R4904	Plug 3 Phase	
30	R1090	Control Relay, Run(DPST)	
31	R413	Voltage Relay	
32	RA441.1	Gasket	
33	RA441.2	Metal Plate	
34	C420	Mag Swtch w/Hse (single)	
35	BX470	BX4 Motor Base Assy	
36	RA467	Seal Assembly (Seal Support)	
37	RA455	Plate, Motor Mounting	
38	R604S	Seal, Motor	
39	R492A	Shaft Pin (new style)	
40	S193456	(H) Motor BX4/BX6 Low-Profile	
41	BX404	No Longer Available	
42	RA494	Baffle	
43	BX601	Short Base (BX4/BX6)	
44	29620	(E) Plastic Base, Low Profile	
45	RA402	Foot	
46	BX658	Base Bolt W/Washer	
47	R611	Motor Support Seal	
48	RA489	O Ring, Seal Support	
49	R662	Bearing, Motor Top	
50	R237	6203 Bearing R2 Top/Btm	