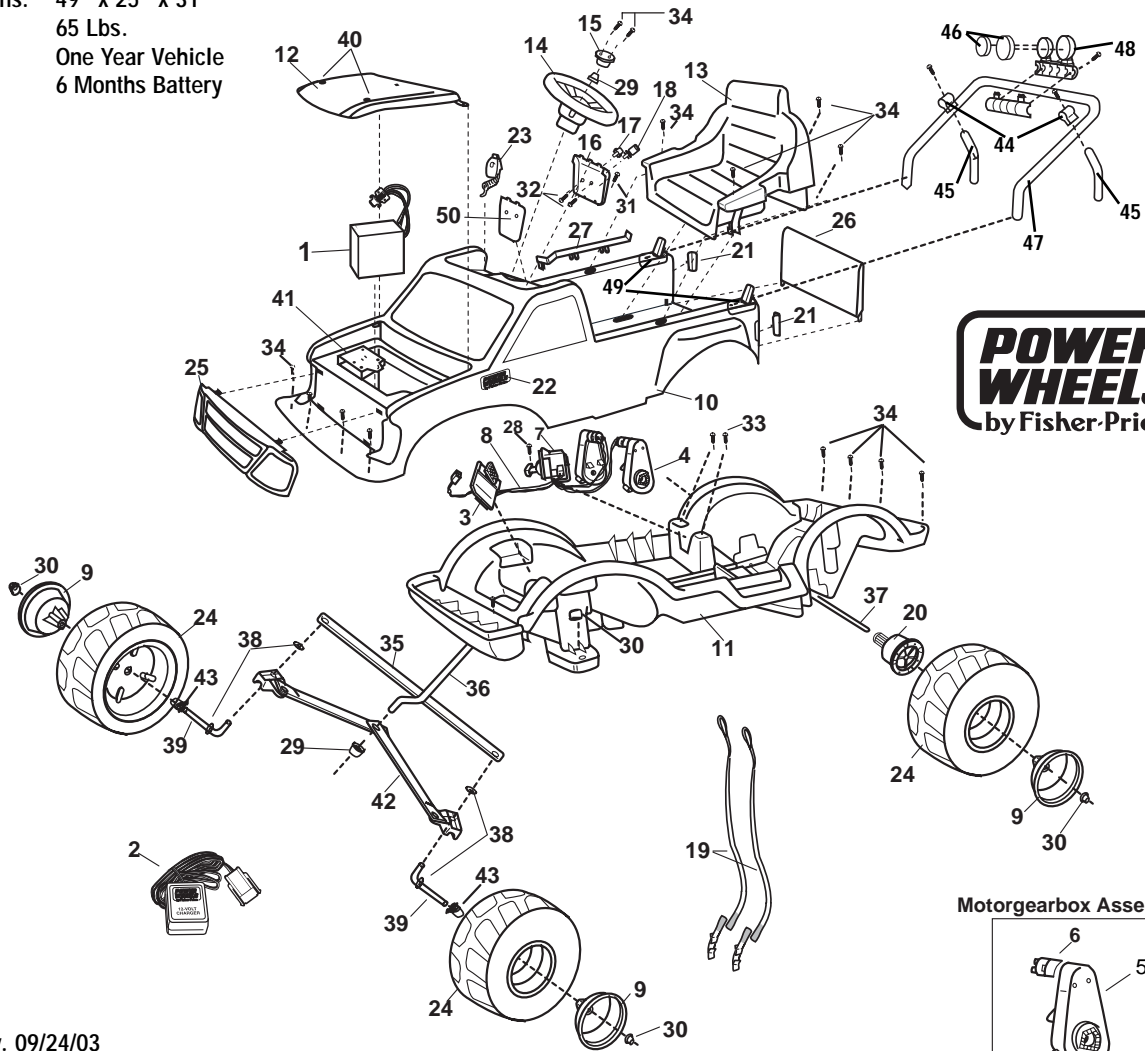


Age Range: 3-6 Yrs.  
 Weight Limit: 65 Lbs.  
 Surfaces: Hard, Grass & Asphalt  
 Speed: 3.5 MPH Forward & Reverse  
 Colors: Green Body  
 Tan Trim  
 Intro: 12-11-00  
 Suggested Retail: \$139.99  
 Box Dimensions: 49" x 25" x 31"  
 65 Lbs.  
 Warranty: One Year Vehicle  
 6 Months Battery

# 78457-9993

## Ford Adventure

### Preschool Series Super 6 Volt



Rev. 09/24/03

| Item No.                          | Description                        | Part No.          | Qty. | Item No.        | Description                  | Part No.   | Qty. | Item No.                                    | Description             | Part No.   | Qty. |
|-----------------------------------|------------------------------------|-------------------|------|-----------------|------------------------------|------------|------|---|-------------------------|------------|------|
| <b>Working / Electrical Parts</b> |                                    |                   |      | 21              | Taillight Lens Set           | 74420-2059 | 1    | 42  | Steering Linkage N/A    | 74420-4289 | 1    |
| 1                                 | 6 Volt Battery                     | 00801-0712        | 1    | 22              | PW Emblem                    | 74460-9069 | 2    | 43  | Round Bushing           | 74550-2689 | 2    |
| 2                                 | Super 6 Volt Charger               | 00801-0974        | 1    | 23              | Microphone N/A               | 78457-9619 | 1    | 44  | Sports Bar Bracket set  | 73233-2179 | 1    |
| 3                                 | Footboard Assembly                 | 78457-9829        | 1    | 24              | Wheel                        | 74420-2459 | 4    | 45  | Sports Bar Support Tube | 74420-2229 | 2    |
| 4                                 | <b>#3B Gearbox w/Motor</b>         | <b>74180-9519</b> | 2    | 25              | Grill                        | 78457-214A | 1    | 46  | KC™ Light Cover         | 78457-2169 | 1    |
| 5                                 | <b>#3B Gearbox w/Out Motor</b>     | <b>74550-9279</b> | 2    | 26              | Taillgate                    | 78457-213A | 1    | 47  | Rollbar                 | 78457-4229 | 1    |
| 6                                 | <b>Motor w/Pinion</b>              | <b>74580-9539</b> | 2    | 27              | Channel Cover N/A            | 78457-2039 | 1    | 48  | KC™ Lights              | 78457-9349 | 1    |
| 7                                 | Shifter Assy.                      | 78457-9439        | 1    | <b>Hardware</b> |                              |            |      | 49  | Sports Bar Foot Set     | 78640-2179 | 1    |
| 8                                 | <b>Wire Harness Assm w/shifter</b> | <b>78474-9889</b> | 1    | 28              | 1" High Speed Lock Out Screw | 0801-0254  | 1    | 50  | Sound box               | 78457-9449 | 1    |
| <b>Plastic Parts / Other</b>      |                                    |                   |      | 29              | .354 Cap Nut                 | 0801-0604  | 2    | <b>Parts Not Shown</b>                      |                         |            |      |
| 9                                 | Hubcap                             | 78457-2079        | 4    | 30              | .437 Cap Nut                 | 0801-0226  | 6    | Main Decal                                  | 78457-0310              | 1          |      |
| 10                                | Vehicle Body (N/A)                 | 75548-210A        | 1    | 31              | #6 x 1/2" Screw              | 0801-0222  | 2    | Literature Bag N/A                          | 75548-9019              | 1          |      |
| 11                                | Tub (N/A)                          | 74240-2119        | 1    | 32              | #6 x 3/8" Screw N/A          | 0801-0219  | 2    | Large Parts Bag (Molded Parts)              | 78457-9039              | 1          |      |
| 12                                | Hood                               | 78457-212A        | 1    | 33              | #8 x 7/8" Trusshead Screw    | 0801-0228  | 2    | Parts Bag with Charger N/A                  | 78457-9139              | 1          |      |
| 13                                | Seat                               | 78457-2319        | 1    | 34              | #8 x 1" Screw (Black)        | 0801-0224  | 16   | Owner's Manual                              | 78457-0920              | 1          |      |
| 14                                | Steering Wheel                     | 74440-2379        | 1    | 35              | Crossbar N/A                 | 74420-4259 | 1    | Hardware Bag                                | 78457-9269              | 1          |      |
| 15                                | Steering Wheel Button (BIK)        | 74550-2729        | 1    | 36              | Steering Column              | 74420-4239 | 1    | <b>Switch singlux (shifter rocker type)</b> | <b>00801-0923</b>       | 1          |      |
| 16                                | Soundbox Cover                     | 78457-2099        | 1    | 37              | Rear Axle                    | 74420-4519 | 1    | <b>Footswitch (plunger type)</b>            | <b>00801-0933</b>       | 1          |      |
| 17                                | Dash Knob                          | 78457-2089        | 1    | 38              | 7/16" Washer                 | 0801-0196  | 4    | <b>Harness Assm</b>                         | <b>78474-9889</b>       | 1          |      |
| 18                                | Key                                | 78457-2049        | 1    | 39              | Front Axle                   | 74420-4509 | 2    |   |                         |            |      |
| 19                                | Seatbelt Set (2 pcs.)              | 75547-5519        | 1    | 40              | J Lock Fastener              | 78570-2439 | 2    |   |                         |            |      |
| 20                                | J-Driver                           | 74440-2229        | 2    | 41              | Battery Retainer             | 74420-4019 | 1    |   |                         |            |      |

**N/A = Not Available** **Bold and Underlined parts are to be purchased and installed by Service Centers only. These items may not be sold directly to consumers by Service Centers or Fisher-Price.**