

Age Range: 1-1/2 to 6 Years
 Weight Limit: 65 lbs.
 Surfaces: Hard & Grass
 Speed: 1.5 / 2.5 / 3.5 MPH (Forward & Reverse)
 Colors: Yellow Body
 Black Wheels
 Blue Trim

Intro: 9-16-97
 Suggested Price: \$149.99
 In Box Dimensions: 47" x 17" x 23"
 In Box Weight: 37-1/2 Lbs.
 Warranty: 90 Days Vehicle
 6 Months Battery



76970-9993

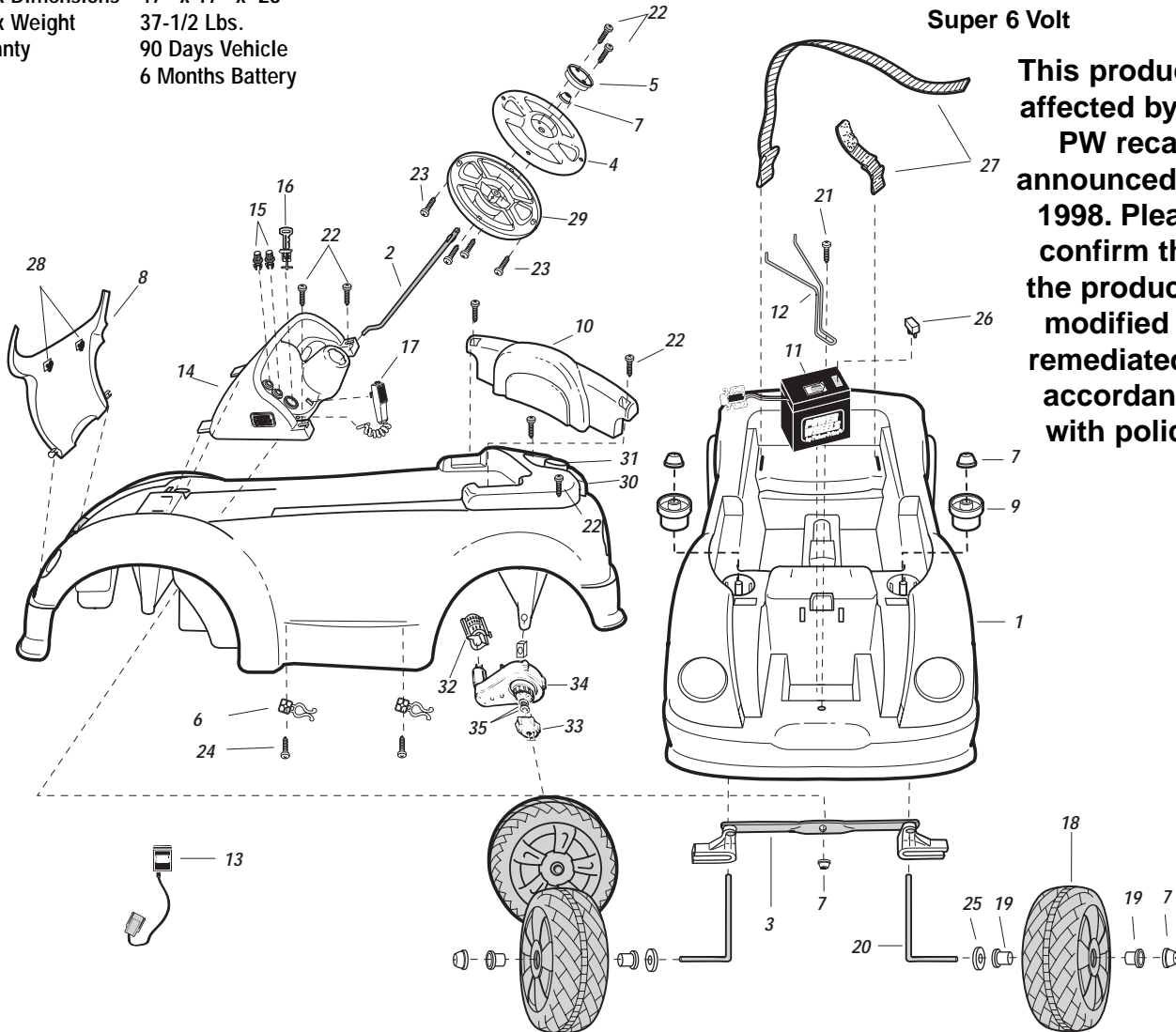
My First Roadster

With The 1-2-3 Learn to Drive System

(Service Merchandise Exclusive until 12-15-97.
 TRU, Walmart & Service Merchandise availability in 1998)

Preschool Series
Super 6 Volt

This product is affected by the PW recall announced Oct 1998. Please confirm that the product is modified or remediated in accordance with policy.



Item No.	Description	Part No.	Qty.	Item No.	Description	Part No.	Qty.	Item No.	Description	Part No.	Qty.
1	Vehicle Body N/A	76970-2109	1	20	Front Axle N/A No Sub	76970-4509	2	PARTS NOT SHOWN			
2	**Steering Column N/A	76970-4239	1	21	#8 x 7/8" Screw (silver)	0801-0228	1		Large Parts Bag N/A	76970-9249	1
3	Steering Linkage	76970-4229	1	22	#8 x 1" Screw (black)	0801-0224	8		Small Parts Bag N/A	76970-9259	1
4	Steering Wheel Cover N/A	76970-2729	1	23	#6 x 1/2" Screw (pointed)	0801-0222	4		Literature Bag N/A	76970-9019	1
5	Steering Wheel Cap N/A	76970-2739	1	24	#8 x 1/2" Screw (blunt / silver)	0801-0202	2		Owner's Manual N/A	76970-0920	1
6	Wire Retainer	74550-2299	2	25	5/16" Washer	0801-0253	2		Large Label Sheet N/A	76970-0320	1
7	.354 Cap Nut	*0801-0215	8	26	Thermal Fuse	0801-0153	1		Small Label Sheet N/A	76970-0340	1
8	Hood N/A	76970-2119	1	27	Seat Belt Set N/A	76970-5519	1		Motor w/Pinion	<u>74580-9539</u>	<u>2</u>
9	Spacer (Front Post Bushing)	74770-2669	2	28	Lock Fastener (when depleted, sub to new 78570-2439)	78570-2239	2		#3A Gearbox w/out Motor	<u>74580-9269</u>	<u>2</u>
10	Seat Back N/A	76970-2309	1	29	Steering Wheel Base N/A	76970-2719	1		Footboard Assembly	74550-9159	1
11	6 Volt Battery	00801-0712	1	30	Boot N/A	76970-2129	1		Wiring Harness Assembly N/A	<u>76970-9799</u>	<u>1</u>
12	Battery Retainer	76970-4019	1	31	Parent Dial N/A	76970-2139	1		Footswitch	<u>0801-0147</u>	<u>1</u>
13	Super 6 Volt Charger	0801-0237	1	32	Motor Cover (when depleted, sub to new 74750-2359 5/4/98)	76803-2489	2		Rear Axle N/A	76970-4519	1
14	Dash N/A	76970-2239	1	33	Wheel Driver	73233-2239	2		Axle Bushing	74550-2689	2
15	Dash Knob N/A	78570-2179	2	34	#3A Gearbox w/6 Volt Motor	74580-9509	2		Forward Hi /Low Switch	0801-0148	1
16	Key Assembly N/A	74550-2439	1	35	7/16" Washers	0801-0196	4		Rotary Swtich (under dial) N/A	0801-0470	1
17	Microphone w/12" Cord N/A	74780-9479	1								
18	Wheel N/A	76970-2459	4								
19	Bushing	74770-2539	4								

**If the steering column is not assembled according to directions, it will may seem too short.

Bold and Underlined parts are to be purchased and installed by Service Centers only. These items may not be sold directly to consumers by Service Centers or Fisher-Price.

Rev.07/30/03