

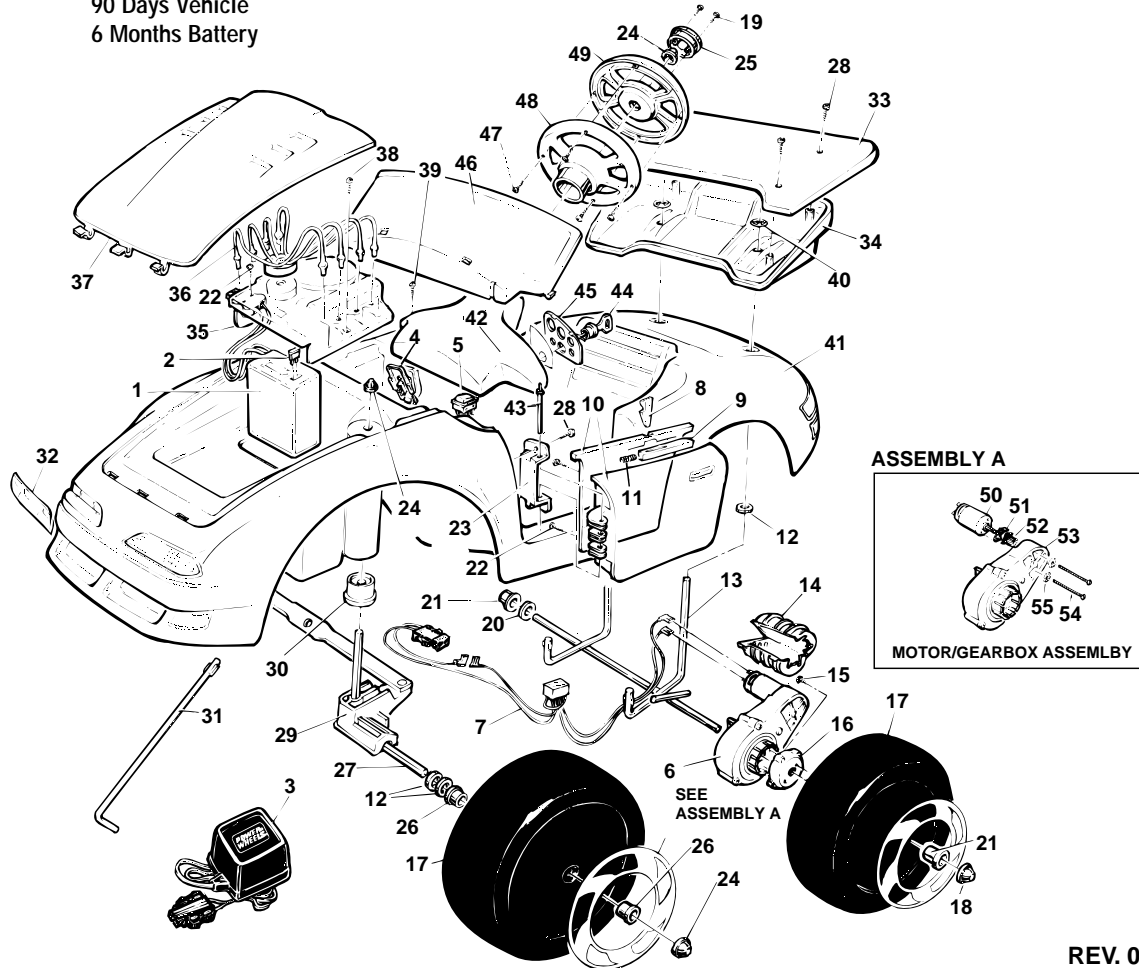
Age Range: 1-1/2 TO 4 Yrs.
 Weight Limit: 50 Lbs.
 Surfaces: Hard
 Speed: 2-1/2 MPH Forward
 2-1/2 MPH Reverse
 Colors: Red Body
 Black Wheels & Trim
 Intro: 1989
 Warranty: 90 Days Vehicle
 6 Months Battery

76126-9993 / 84600

HOT SHOT®

Deluxe 6 Volt

* see service bulletin #138



REV. 09/11/03

| Item No. | Description | Part No. | Qty. | Item No. | Description | Part No. | Qty. | Item No. | Description | Part No. | Qty. |
|----------|-----------------------------|-------------------|----------|----------|---------------------------|------------|------|---|-----------------------------|-------------------|----------|
| 1 | *Battery Type H | 00801-1234 | 1 | 25 | Steering Wheel Cap | 74550-2729 | 1 | 49 | Steering Wheel Cover N/A | 76133-2339 | 1 |
| 2 | 25 amp Fuse Kit | 0801-0151 | 1 | 26 | Front Axle Bushing | 74770-2539 | 4 | <u>50</u> | <u>Motor N/A</u> | <u>74510-0640</u> | <u>1</u> |
| 3 | *Charger, 6 Volt Type H | 00801-0975 | 1 | 27 | Front Axle | 73241-4509 | 2 | 51 | D Lock Washer | 0801-0329 | 1 |
| 4 | Footboard Assembly N/A | 80023-0012 | 1 | 28 | #10 x 3/4" Screw | 0801-0309 | 5 | <u>52</u> | <u>Motor Drive Gear N/A</u> | <u>80026-0105</u> | <u>1</u> |
| 5 | *Control Switch | 80014-0073 | 1 | 29 | Steering Linkage N/A | 550019 | 1 | <u>53</u> | <u>3A Gearbox</u> | <u>74580-9269</u> | <u>1</u> |
| 6 | 3A Motor/Gearbox Assy | 74510-9519 | 1 | 30 | Post Bushing N/A | 80009-0085 | 2 | <u>54</u> | <u>Motor Bolts</u> | <u>0801-0269</u> | <u>2</u> |
| 7 | <u>*Wiring Harness N/A</u> | <u>80064-0028</u> | <u>1</u> | 31 | Steering Column N/A | 80054-0017 | 1 | <u>55</u> | <u>Star Washer N/A</u> | <u>0801-0330</u> | <u>2</u> |
| 8 | Door Latch Trigger N/A | 80018-0036 | 1 | 32 | Headlight Lens Set N/A | 80030-0018 | 1 | PARTS NOT SHOWN | | | |
| 9 | Door Latch N/A | 80018-0026 | 1 | 33 | Spoiler Cover N/A | 80001-0079 | 1 | .187 Retainer (For Trigger Mechanism) N/A | | | |
| 10 | Inner/Outer Door Set N/A | 80018-0068 | 1 | 34 | Spoiler Base N/A | 80001-0078 | 1 | 78480-2249 2 | | | |
| 11 | Door Latch Spring N/A | 76822-4549 | 1 | 35 | Pretend Engine N/A | 74771-2119 | 1 | Traction Band N/A 80001-0123 1 | | | |
| 12 | 5/16" Washer | 0801-0253 | 6 | 36 | Pretend Engine Plug Wires | 78480-2129 | 1 | Wire Harness Fastener N/A 0801-0311 1 | | | |
| 13 | Rear Axle Assembly N/A | 80046-0014 | 1 | 37 | Hood N/A | 80031-0017 | 1 | 1 x 2 Connector Clip N/A 80001-0096 2 | | | |
| 14 | Motor Cover | 74750-2359 | 1 | 38 | #8 x 7/8" Trusshead Screw | 0801-0228 | 2 | Decal Sheet (Vinyl) N/A 80017-0024 1 | | | |
| 15 | #10 x 1/2" Screw | 0801-0255 | 1 | 39 | #8 x 3/4" Plascrow | 0801-0223 | 2 | Decal Sheet (Mylar) N/A 80017-0025 1 | | | |
| 16 | Wheel Driver | 73233-2239 | 1 | 40 | .354 Retain w/o Body N/A | 0801-0252 | 2 | Literature Bag N/A 80044-0136 1 | | | |
| 17 | Wheel N/A | 80062-0012 | 4 | 41 | Body N/A | 80005-0032 | 1 | | | | |
| 18 | .437 Cap Nut (Black) | 0801-0214 | 2 | 42 | Dashboard N/A | 80016-0005 | 1 | | | | |
| 19 | #8 x 7/8" Plascrow N/A | 80006-0008 | 2 | 43 | 3/4" Rivet N/A | 0801-0194 | 1 | | | | |
| 20 | 7/16" Washer | 0801-0196 | 1 | 44 | Key/Housing Assy. N/A | 80001-0082 | 1 | | | | |
| 21 | Rear Axle Bushing | 74550-2689 | 3 | 45 | Dash Cover Plate N/A | 80016-0006 | 1 | | | | |
| 22 | #8 x 1/2" Phillips Plascrow | 0801-0202 | 5 | 46 | Windshield N/A | 80063-0007 | 1 | | | | |
| 23 | Door Hinge Support N/A | 80018-0027 | 1 | 47 | #6 x 1/2" Phillips Screw | 0801-0222 | 4 | | | | |
| 24 | .354 Cap Nut (Black) | 0801-0604 | 5 | 48 | Steering Wheel Base N/A | 74779-2129 | 1 | | | | |

* see service bulletin #138

Bold and Underlined parts are to be purchased and installed by Service Centers only. These items may not be sold directly to consumers by Service Centers or Fisher-Price.

