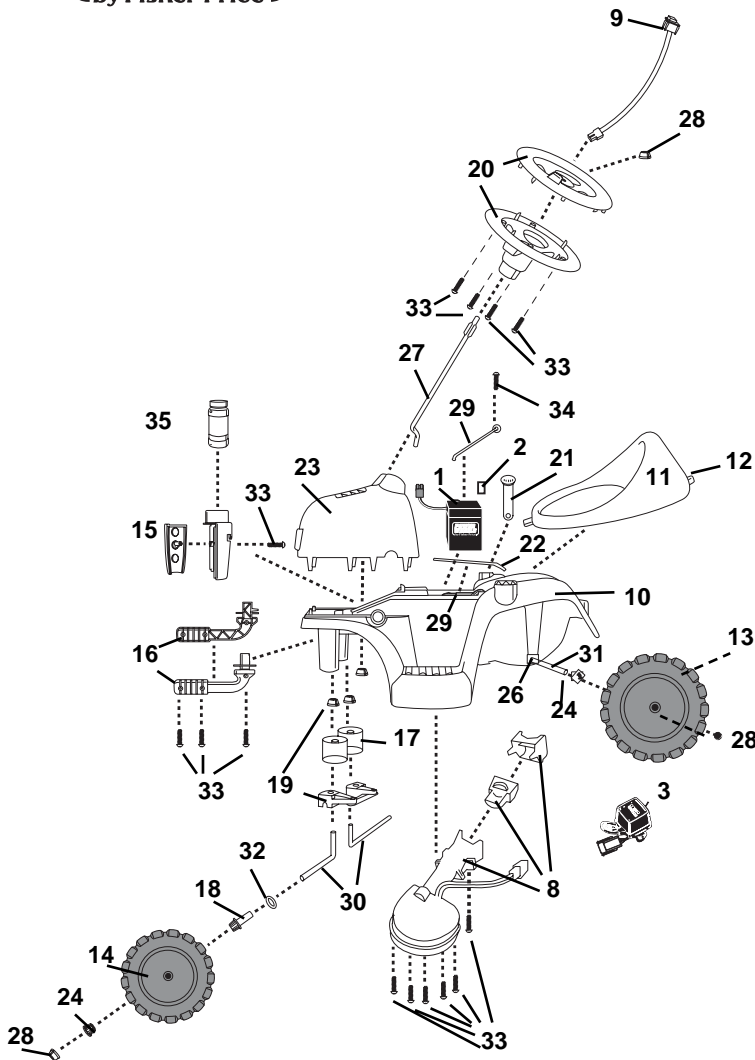




75320-9993 Bubble Tractor Toddler Series 6 Volt



Age Range: 12-36 months
 Weight Limit: up to 40 lbs 18kgs
 Surfaces: Hard
 Speed: 2 mph
 Colors: Green and Yellow
 Intro: 2000
 Suggested Retail: \$89.99
 Box Dimensions: 17" x 12" x 27"
 Warranty: One Year Bumper to bumper
 6 Months Battery

Rev. 11/14/03

Item No.	Description	Part No.	Qty.	Item No.	Description	Part No.	Qty.	Item No.	Description	Part No.	Qty.
Working / Electrical Parts				20	Steering wheel No Sub N/A	75320-231A	1	Other parts			
1	Battery 4 amp hour 6 volt	0801-0336	1	21	Dip stick	75320-2399	1	35	Bubble Solution	00925-0004	1
2	Fuse	0801-0151	1	22	Gearbox Cover (yellow)	75320-2469	1				
3	Charger 4 amp fused	00801-0976	1	23	Cowling With Emblem	75320-9119	1				
4	Motor Gearbox Assembly with lock lever	75320-9519	1	24	Wheel Bushing (Round)	00801-0981	2				
5	Gearbox W/out Motor N/A	75320-9529	1	26	Bushing without Ext.	74504-2549	2				
6	Motor Pinion Assembly N/A	76940-9539	1								
7	Main Harness Assembly	75320-9799	1								
8	Bubble Blower Assm (Reservoir)	75320-9169	1								
9	Switch Assm	78560-9799	1								
Plastic / Other Parts				Hardware / Metal Parts							
10	Body N/A	75320-2109	1	27	Steering column	75320-4239	1	Parts Not Shown			
11	Seat with lock N/A	75320-9309	1	28	.354 Retainers	0801-0604	6	Parts Bag	75320-9039	1	
12	J lock Fastener	78570-2439	1	29	Battery Retainer	74230-4129	1	Parts Bag with bubble Solution N/A	75320-9139	1	
13	Rear Wheel	75320-2149	2	30	Front axle	74504-4509	2	Hardware Bag	75320-9269	1	
14	Front Wheel N/A	72664-2279	2	31	Rear axle	74504-4539	1	Literature Bag N/As	75320-9019	1	
15	Exhaust Set	75320-9359	1	32	Washer	0801-0253	2	Owner's Manual	75320-0920	1	
16	Lift Handle Set	75320-9369	1	33	Screw #8x .075	0912-8001	13	Decal Sheet main	75320-0310	1	
17	Collar/Bushing	76950-2129	1	34	Truss Screw #8x 7/8	0801-0228	1	Decal Sheet small	75320-0320	1	
18	Round Bushing with extention	00801-0983	1								
19	Linkage assembly	75320-9229	1								

N/A = Not Available

Bold and Underlined parts are to be purchased and installed by Service Centers only. These items may not be sold directly to consumers by Service Centers or Fisher-Price.