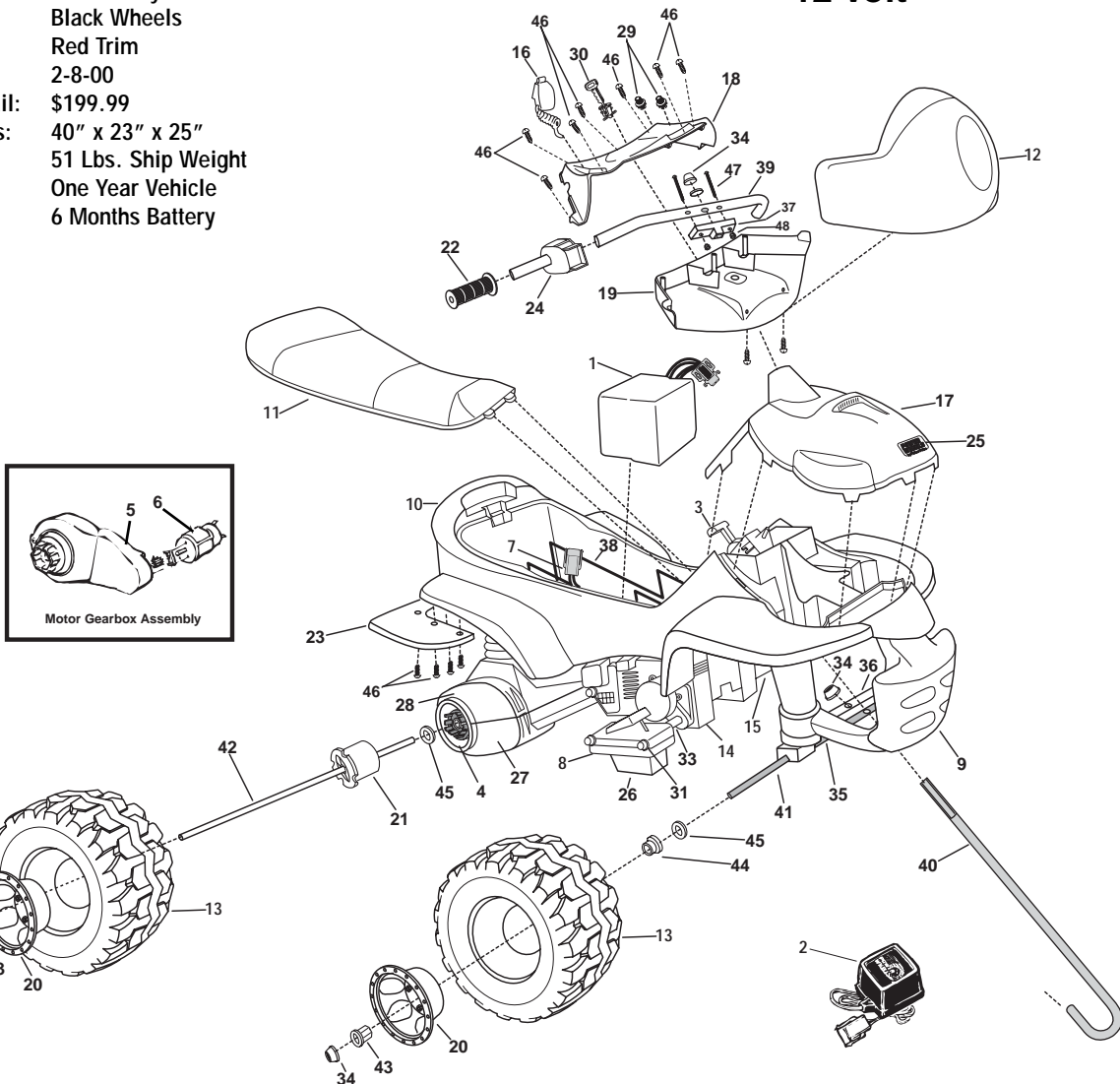


Age Range: 3-7 Yrs.
 Weight Limit: 65 Lbs.
 Surfaces: Hard, Grass & Hills
 Speed: 2.5 & 5.0 MPH Forward
 2.5 MPH Reverse
 Colors: White Body
 Black Wheels
 Red Trim
 Intro: 2-8-00
 Suggested Retail: \$199.99
 Box Dimensions: 40" x 23" x 25"
 51 Lbs. Ship Weight
 Warranty: One Year Vehicle
 6 Months Battery

74527-9993 Trail Beast

Warehouse Clubs

Advanced Series 12 Volt



Rev. 12/02/03

Item No.	Description	Part No.	Qty.	Item No.	Description	Part No.	Qty.	Item No.	Description	Part No.	Qty.
Working / Electrical Parts											
1	12V Battery	00801-0638	1	19	Dash - Lower N/A	74527-2769	1	40	Steering Column	74110-4249	1
2	12V Charger	00801-0972	1	20	Hubcap N/A	78660-2129	4	41	Front Axle N/A	74527-4509	1
3	Shifter Assembly	73690-9439	1	21	Driver (10 Rib)	74460-2249	2	42	Rear Axle	74527-4519	1
4	#7 Motor Gearbox Assembly	00968-2910	2	22	Handgrip Set	73690-2229	1	43	Hex Bushing	73233-2559	4
5	Gearbox w/out Motor	74310-9529	2	23	Mud Flap Set N/A	74527-9289	1	44	Axle Bushing	74550-2689	2
6	Motor Pinion Assembly	74110-9579	2	24	Sound Box Assembly	74750-9449	1	45	7/16" Washer	0801-0196	6
7	Wiring Harness: Motor	74110-9799	1	25	PW Emblem	74460-9069	1	46	#8 x 3/4" Phillips Screw	0801-0223	19
	Wiring Harness: Shifter	74110-9689	1	26	Footboard / Lower	74110-2179	1	47	#10 x 1-1/2" Phill Screw N/A	76222-4459	2
	Wiring Harness w/Shifter	74110-9679	1	27	Motor Housing Bottom N/A	74527-2159	1	48	#10 Nylock Lock Nut N/A	0801-0318	2
8	Footboard Assembly	74527-9169	1	28	Motor Housing Top N/A	74527-2169	1	Parts Not Shown			
				29	Radio Knob N/A	74527-2149	2	Large Parts Bag N/A		74527-9249	1
				30	Key Housing Assm.	78490-9369	1	Small Parts Bag N/A		74527-9259	1
Plastic / Other Parts											
9	Brushguard N/A	74527-2079	1	Hardware / Metal Parts							
10	Body (N/A)	74558-2209	1	31	.354 Cap Nut (black)	0801-0604	4	Hardware Bag N/A		74527-9279	1
11	Seat	74110-2309	1	32	Motor Bolts	0801-0269	2	Literature Bag N/A		74527-9019	1
12	Fairing / Front N/A	74750-274A	1	33	Footboard Support	76262-4439	2	Owner's Manual N/A		74527-0920	1
13	Wheel N/A	74527-2469	4	34	.437 Cap Nut - (black)	0801-0226	6	Decal Sheet N/A		74527-0310	1
14	False Motor Cover / Right N/A	74110-2059	1	35	Steering Linkage Assm.	74527-9239	1	Clip Adhesive		0801-0313	1
15	False Motor Cover / Left N/A	74110-2069	1	36	Crossbar	74110-4639	1	Footrest		74110-2189	1
16	Microphone	74527-9479	1	37	Powdered Metal Neck	76816-4289	1	Footswitch		00801-0933	1
17	Cowling Assembly N/A	74527-9099	1	38	Battery Retainer	74110-4429	1	Cap Nut Assembly Tool		78640-2629	1
18	Dash - Upper N/A	74527-275A	1	39	Handlebar	74750-4229	1				

N/A = Not Available

Bold and Underlined parts are to be purchased and installed by Service Centers only. These items may not be sold directly to consumers by Service Centers or Fisher-Price.

